

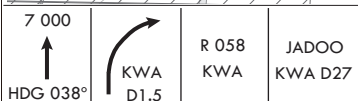
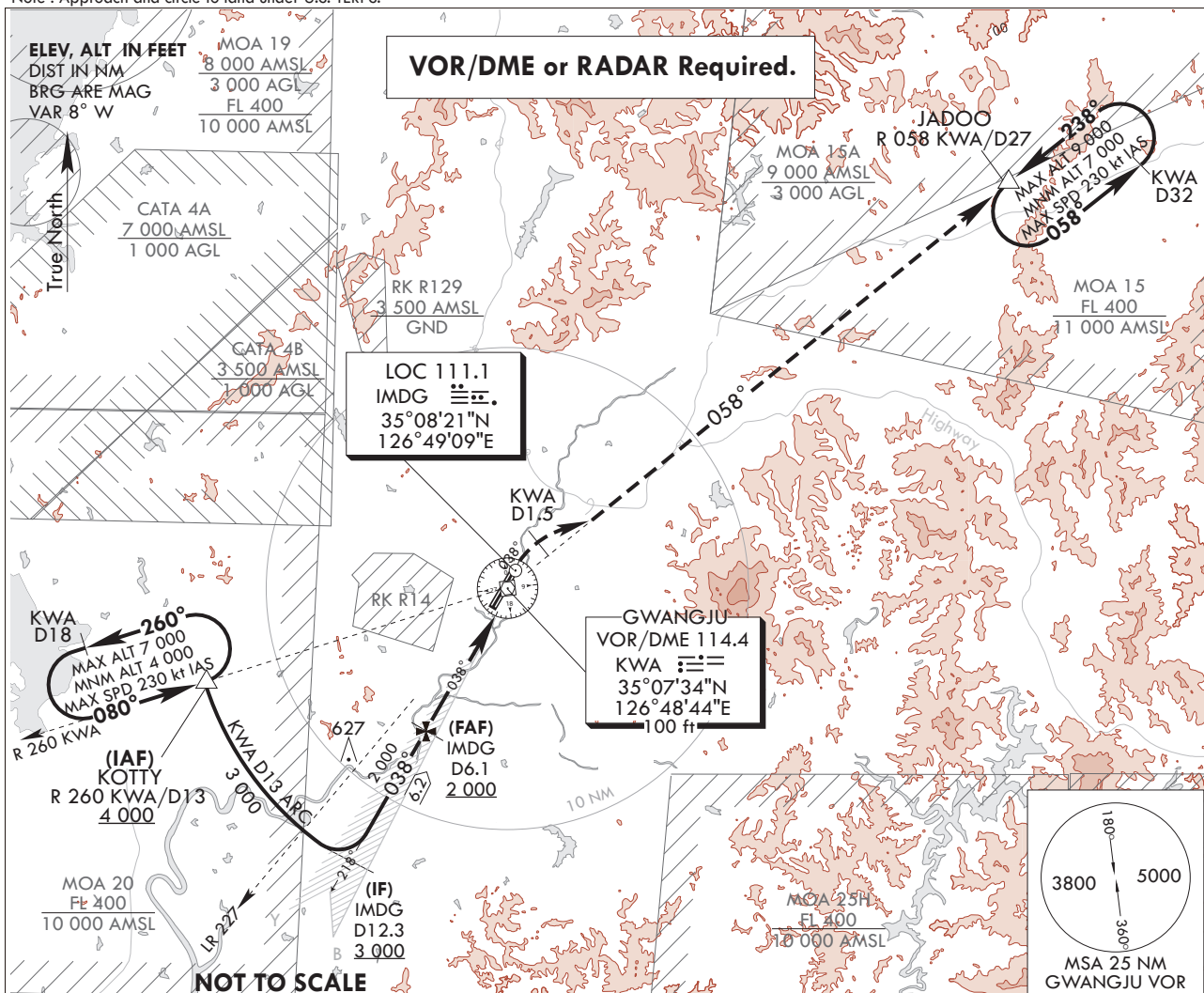
**INSTRUMENT  
APPROACH  
CHART**

**AERODROME ELEV 48 ft**  
HEIGHTS RELATE TO  
THR RWY 04R - ELEV 43 ft  
HIGHEST ELEV TDZ 46 ft

GWANGJU APP 130.0  
228.9  
GWANGJU TWR 118.05  
254.6

**GWANGJU/Gwangju(RKJJ)**  
ILS/DME RWY 04R

Note : Approach and circle to land under U.S. TERPS.

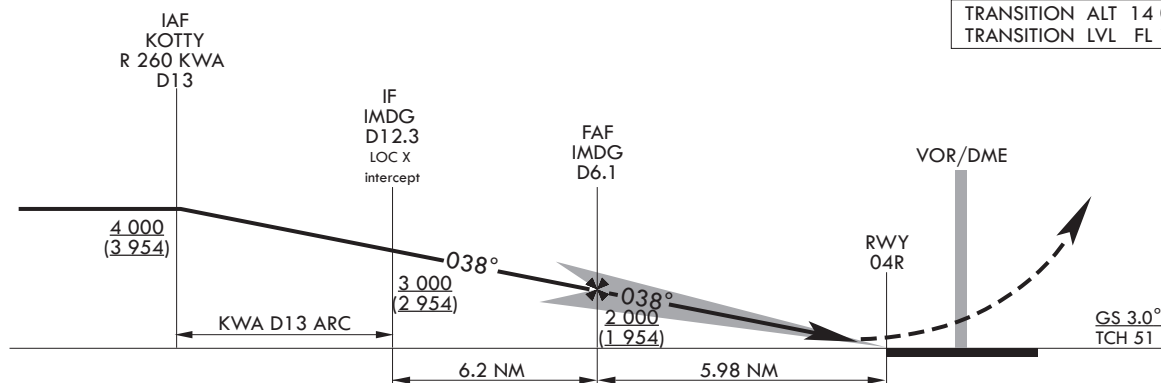


**MISSED APPROACH**

Climb to 7 000 ft on HDG 038° to KWA D1.5, and climbing right turn to intercept R 058 KWA and track on R 058 KWA to JADOO and hold, continue climb-in-hold to 7 000 ft.

Use IMDG DME when on the LOC course.

TRANSITION ALT 14 000  
TRANSITION LVL FL 140



CATEGORY	A	B	C	D
S-ILS 04R		246/24	200(200-1/2)	
S-ILS 04R (ALS INOP)		246/40	200(200-3/4)	

\* Circling not authorized.

Change : Information of glide slope.

INTENTIONALLY

LEFT

BLANK

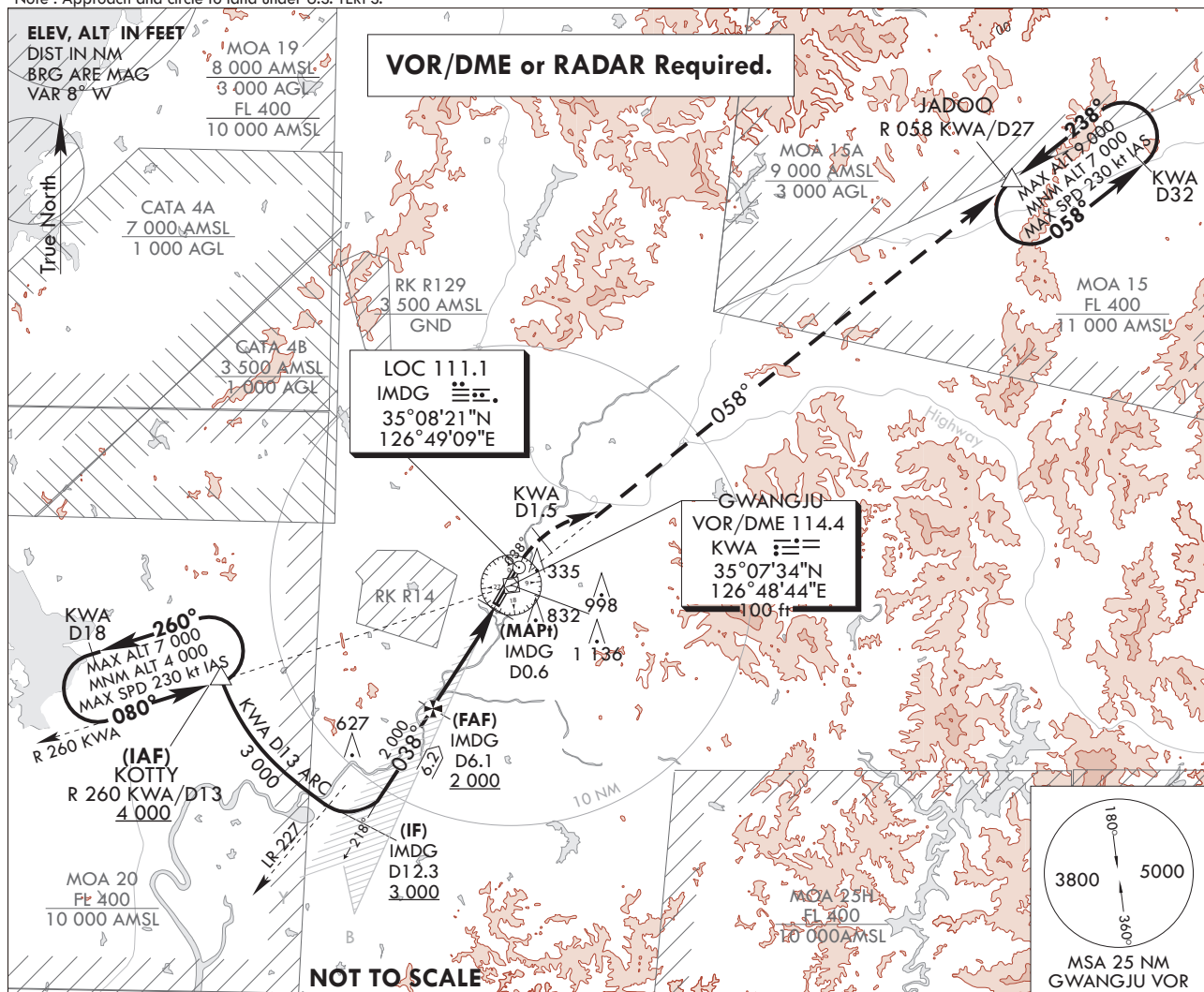
**INSTRUMENT  
APPROACH  
CHART**

**AERODROME ELEV 48 ft**  
HEIGHTS RELATE TO  
THR RWY 04R - ELEV 43 ft  
HIGHEST ELEV TDZ 46 ft

GWANGJU APP 130.0  
228.9  
GWANGJU TWR 118.05  
254.6

**GWANGJU/Gwangju(RKJJ)  
LOC/DME RWY 04R**

Note : Approach and circle to land under U.S. TERPS.



7 000 ↑ HDG 038°	R 058 KWA D1.5	JADOO KWA D27	Use IMDG DME when on the LOC course.		<b>MISSED APPROACH</b> Climb to 7 000 ft on HDG 038° to KWA D1.5, and climbing right turn to intercept R 058 KWA and track on R 058 KWA to JADOO and hold, continue climb-in-hold to 7 000 ft.	
IAF KOTTY R 260 KWA D13	IF IMDG D12.3 LOC X intercept	FAF IMDG D6.1	MAPt IMDG D0.6	VOR/DME	TRANSITION ALT 14 000 TRANSITION LVL FL 140	
4 000 (3 954)	3 000 (2 954)	2 000 (1 954)	D1.5	RWY 04R	VDA 3.0° TCH 51	
KWA D13 ARC		6.2 NM	5.54 NM	0.44		
CATEGORY	A	B	C	D		
S-LOC 04R	520/40 474(500-3/4)		520/50 474(500-1)			
S-LOC 04R (ALS INOP)	520/55 474(500-1)		520-1 3/8 474(500-1 3/8)			
CIRCLING*	720-1 672(700-1)	1 140-1 1/2 1 092(1 100-1 1/2)	1 140-3 1 092(1 100-3)	1 380-3 1 332(1 400-3)		

\* Circling not authorized for west of RWY 04-22.

Change : Withdrawal of symbol for glide slope.

INTENTIONALLY

LEFT

BLANK



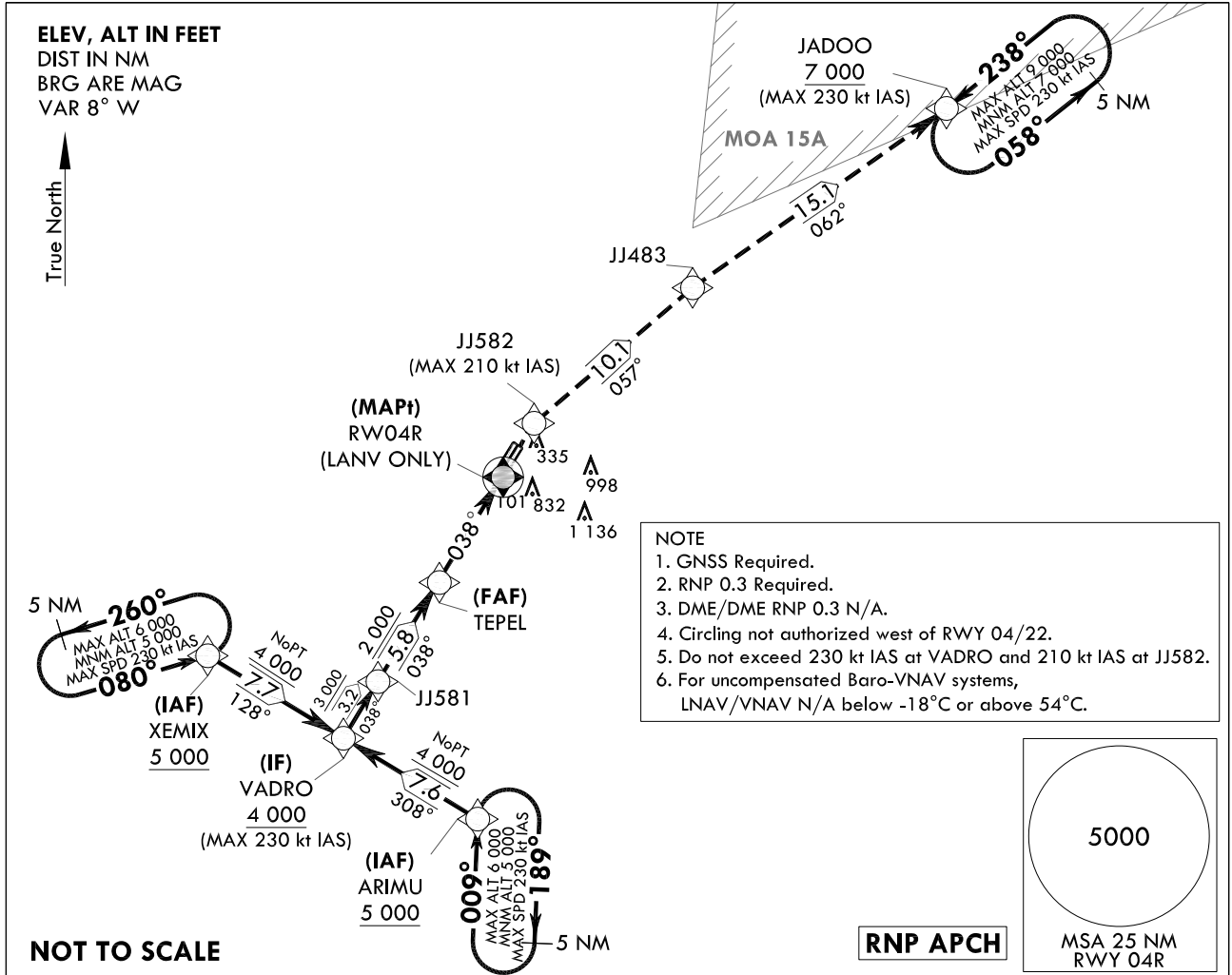
**INSTRUMENT  
APPROACH  
CHART**

**AERODROME ELEV 48 ft**  
HEIGHTS RELATED TO  
THR RWY 04R - ELEV 43 ft  
HIGHEST ELEV TDZ 46 ft

GWANGJU APP 130.0  
228.9  
GWANGJU TWR 118.05  
254.6

**GWANGJU/Gwangju(RKJJ)**  
RNP RWY 04R

Note : Approach and circle to land under U.S. TERPS.

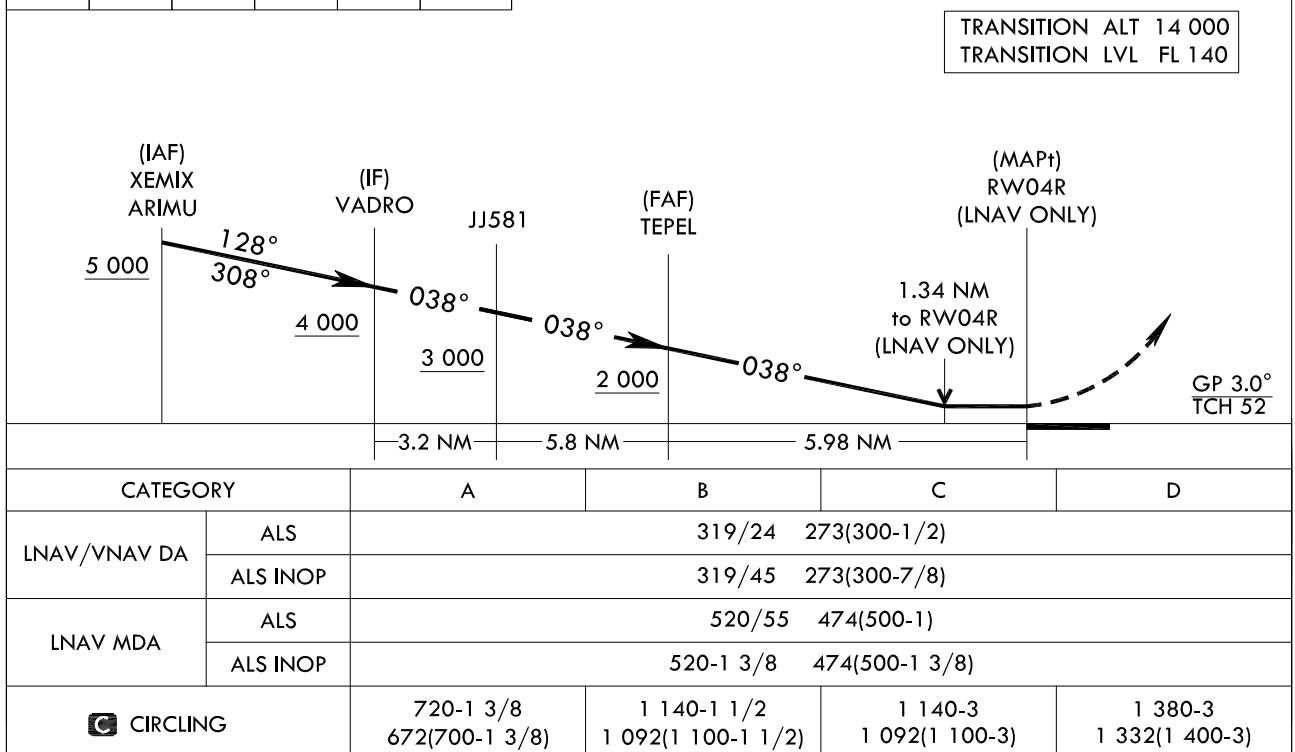


7 000	JJ582	TR	JJ483	TR	JADOO
↑	✧	057°	✧	062°	7 000

**MISSED APPROACH**

Climb to 7 000 ft on direct to JJ582 and track 057° to JJ483 and track 062° to JADOO and hold, continue climb-in-hold to 7 000 ft.

TRANSITION ALT 14 000  
TRANSITION LVL FL 140



Change : Information of fix names(XEROX → XEMIX, DAEIN → VADRO, NOVEN → ARIMU, NOBEL → TEPEL).

GWANGJU/Gwangju(RKJJ)  
RNP RWY 04R

## AERONAUTICAL DATA TABULATION

## Instrument Approach Procedure Coding Tables

## RNP RWY 04R - via XEMIX to VADRO(IF)

Serial Number	Path Descriptor	Waypoint Identifier	Fly-over	Course/Track M(°T)	Distance (NM)	Turn direction	Altitude (ft)	Speed (kt)	Coordinates	VPA/TCH	Navigation specification	Remarks
001	IF	XEMIX	-	-	-	-	+5 000	-230	34°57'41.4"N 126°30'53.8"E	-	RNP APCH	IAF
002	TF	VADRO	-	128 (119.8)	7.7	-	+4 000	-230	34°53'51.4"N 126°39'01.7"E	-	RNP APCH	IF NoPT

## RNP RWY 04R - via ARIMU to VADRO(IF)

Serial Number	Path Descriptor	Waypoint Identifier	Fly-over	Course/Track M(°T)	Distance (NM)	Turn direction	Altitude (ft)	Speed (kt)	Coordinates	VPA/TCH	Navigation specification	Remarks
001	IF	ARIMU	-	-	-	-	+5 000	-230	34°50'04.0"N 126°47'02.3"E	-	RNP APCH	IAF
002	TF	VADRO	-	308 (299.9)	7.6	-	+4 000	-230	34°53'51.4"N 126°39'01.7"E	-	RNP APCH	IF NoPT

## RNP RWY 04R - via VADRO(IF) to MAHF

Serial Number	Path Descriptor	Waypoint Identifier	Fly-over	Course/Track M(°T)	Distance (NM)	Turn direction	Altitude (ft)	Speed (kt)	Coordinates	VPA/TCH	Navigation specification	Remarks
001	TF	VADRO	-	-	-	-	+4 000	-230	34°53'51.4"N 126°39'01.7"E	-	RNP APCH	IF
002	TF	JJ581	-	038 (029.8)	3.2	-	+3 000	-	34°56'38.2"N 126°40'57.9"E	-	RNP APCH	-
003	TF	TEPEL	-	038 (029.9)	5.8	-	+2 000	-	35°01'41.5"N 126°44'29.5"E	-3.0/52	RNP APCH	FAF
004	TF	RW04R	Y	038 (029.9)	6.0	-	-	-	35°06'53.1"N 126°48'07.4"E	-	RNP APCH	MAPt LNAV ONLY
005	DF	JJ582	-	-	-	-	-	-210	35°09'21.0"N 126°49'51.1"E	-	RNP APCH	-
006	TF	JJ483	-	057 (048.2)	10.1	-	-	-	35°16'05.6"N 126°59'03.3"E	-	RNP APCH	-
007	TF	JADOO	-	042 (053.6)	15.1	-	+7 000	-230	35°25'02.6"N 127°13'54.1"E	-	RNP APCH	-

## HOLDING PROCEDURE

Holding Identification	Path Descriptor	Waypoint Identifier	Fly-over	Course/Track M(°T)	Distance (NM)	Turn direction	Altitude (ft)	Speed (kt)	Coordinates	VPA/TCH	Navigation specification	Remarks
RNP RWY 04R	HM	ARIMU	-	009 (000.6)	5.0	R	-6 000 +5 000	-230	34°50'04.0"N 126°47'02.3"E	-	RNAV 1	-
	HM	XEMIX	-	080 (071.6)	5.0	L	-6 000 +5 000	-230	34°57'41.4"N 126°30'53.8"E	-	RNAV 1	-
	HM	JADOO	-	238 (229.6)	5.0	L	-9 000 +7 000	-230	35°25'02.6"N 127°13'54.1"E	-	RNAV 1	-

Change : Information of fix names(XEROX → XEMIX, DAEIN → VADRO, NOVEM → ARIMU, NOBEL → TEPEL).

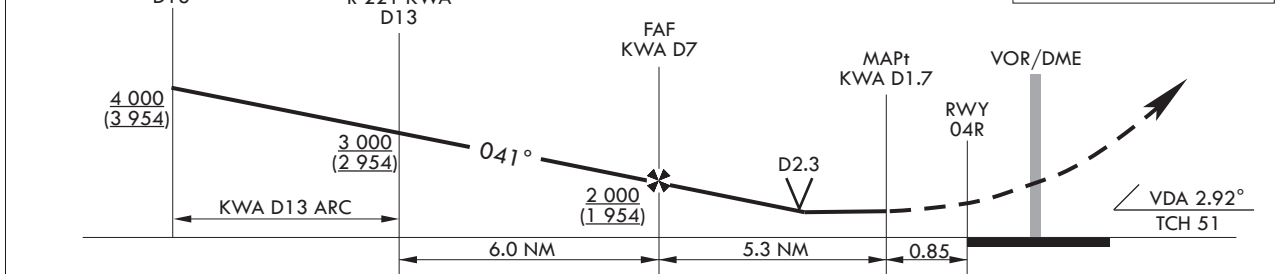
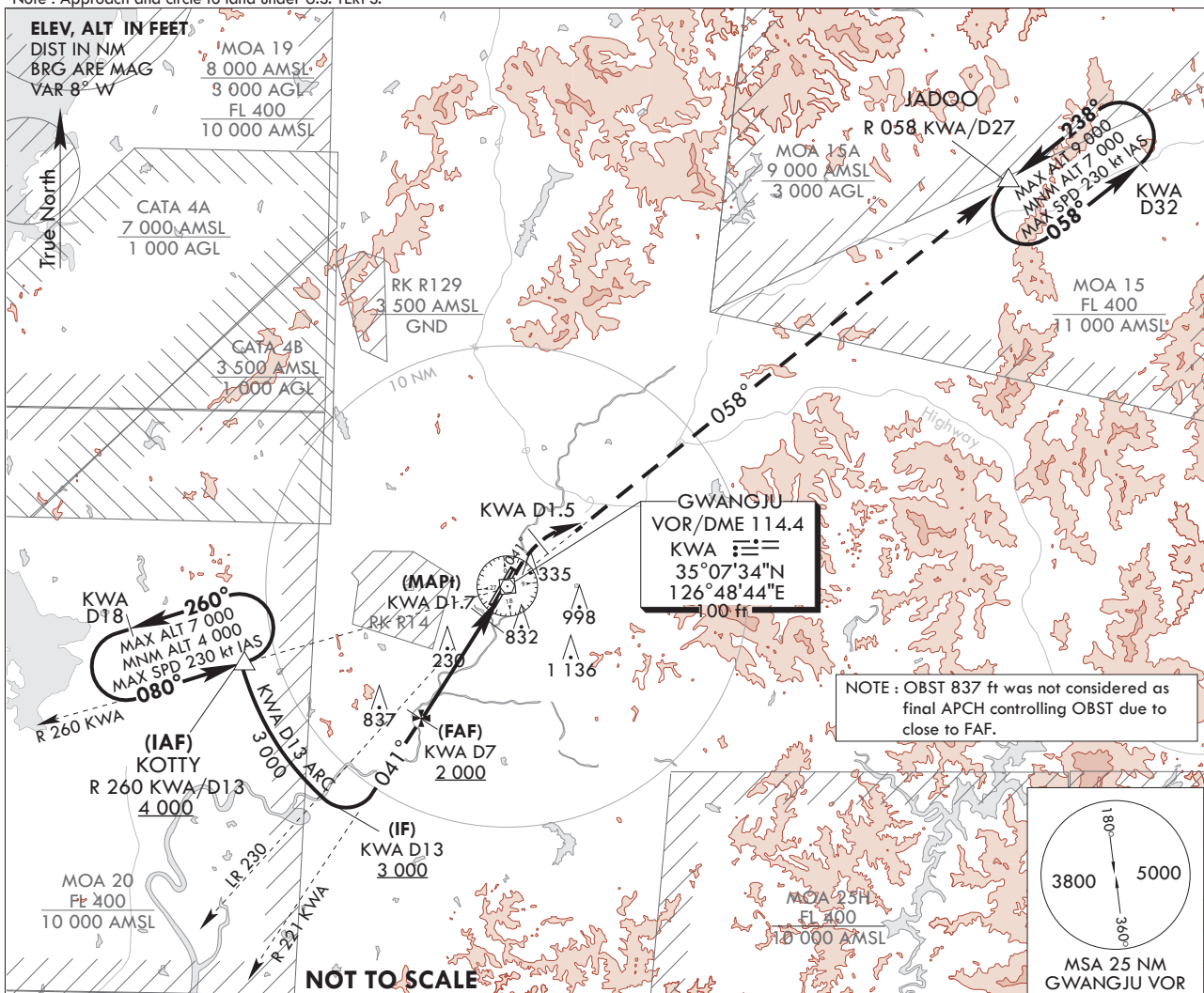
**INSTRUMENT  
APPROACH  
CHART**

**AERODROME ELEV 48 ft**  
HEIGHTS RELATE TO  
THR RWY 04R - ELEV 43 ft  
HIGHEST ELEV TDZ 46 ft

GWANGJU APP 130.0  
228.9  
GWANGJU TWR 118.05  
254.6

**GWANGJU/Gwangju(RKJJ)  
VOR/DME RWY 04R**

Note : Approach and circle to land under U.S. TERPS.



CATEGORY	A	B	C	D
S-VOR 04R	560/40 514(600-3/4)		560/55 514(600-1)	
S-VOR 04R (ALS INOP)	560/55 514(600-1)		560-1 3/8 514(600-1 3/8)	
CIRCLING*	720-1 672(700-1)	1 140-1 1/2 1 092(1 100-1 1/2)	1 140-3 1 092(1 100-3)	1 380-3 1 332(1 400-3)

\* Circling not authorized for west of RWY 04-22.

Change : Page control.

**INTENTIONALLY**

**LEFT**

**BLANK**

**INSTRUMENT  
APPROACH  
CHART**

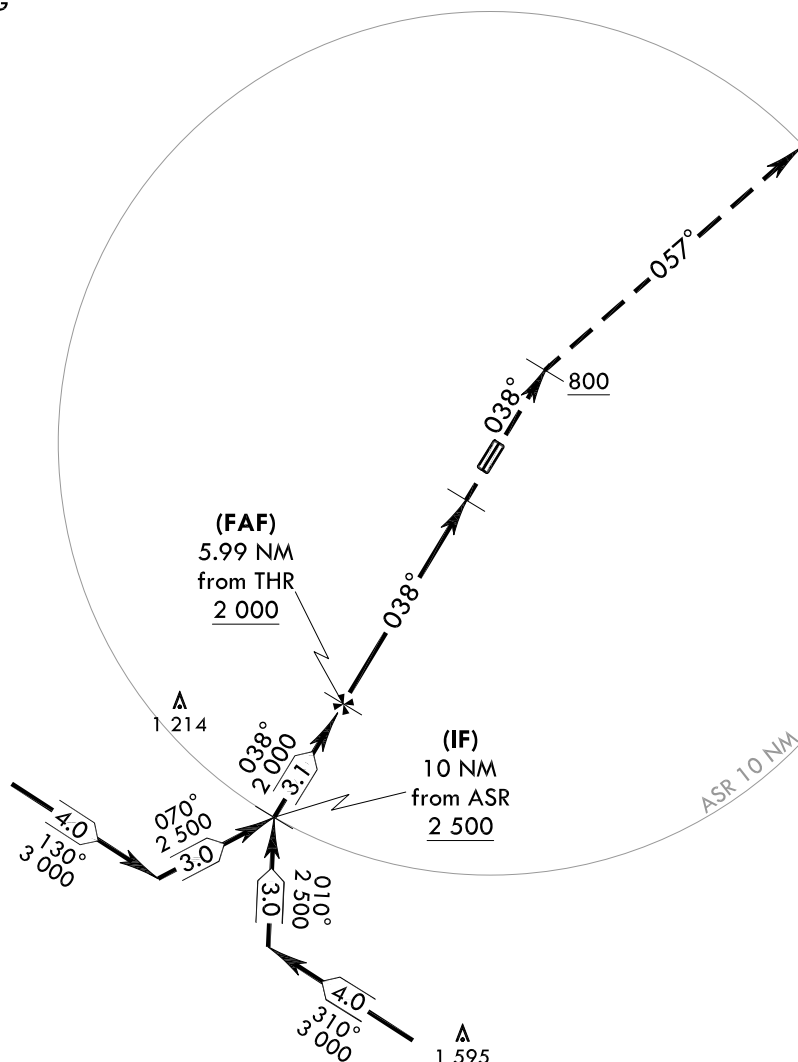
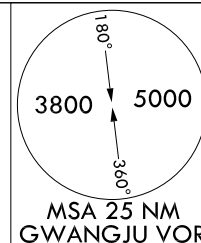
**AERODROME ELEV 48 ft**  
HEIGHTS RELATED TO  
THR RWY 04R - ELEV **43 ft**  
HIGHEST ELEV TDZ **46 ft**

GWANGJU APP 130.0  
228.9  
GWANGJU TWR 118.05  
254.6

**GWANGJU/Gwangju(RKJJ)**  
**PAR RWY 04R**

Note : Approach and circle to land under U.S. TERPS.

**ELEV, ALT IN FEET**  
**DIST IN NM**  
**BRG ARE MAG**  
**VAR 8° W**

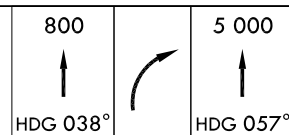


**NOT TO SCALE**

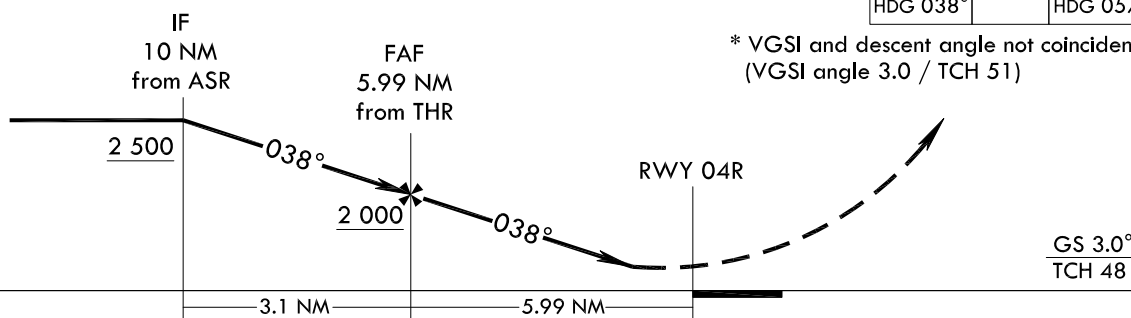
**MISSED APPROACH**

Climb HDG 038° to 800 ft, then climbing right turn HDG 057° maintain 5 000 ft and assigned HDG for radar vector.

TRANSITION ALT 14 000  
TRANSITION LVL FL 140



\* VGSI and descent angle not coincident.  
(VGSI angle 3.0 / TCH 51)



CATEGORY	A	B	C	D	E
S-PAR 04R		246/24	200(200-1/2)		
S-PAR 04R (ALS INOP)		246/40	200(200-3/4)		

\* Circling not authorized.

Change : Page control.

**OFFICE OF CIVIL AVIATION**

**AIRAC AIP AMDT 1/23**  
**Effective : 1600UTC 22 FEB 2023**

**INTENTIONALLY**

**LEFT**

**BLANK**

**INSTRUMENT  
APPROACH  
CHART**

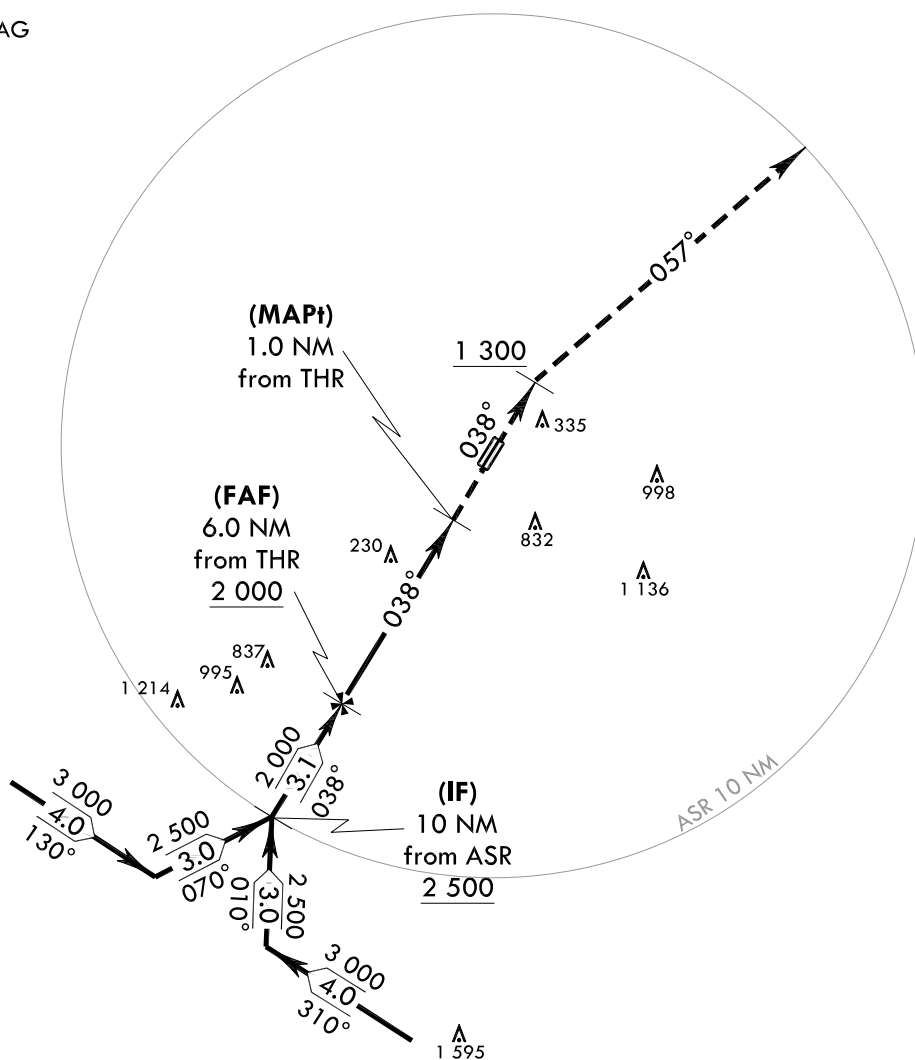
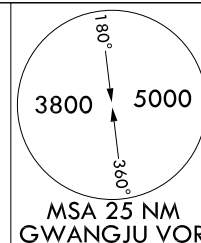
**AERODROME ELEV 48 ft**  
HEIGHTS RELATED TO  
THR RWY 04R - ELEV **43 ft**  
HIGHEST ELEV TDZ **46 ft**

GWANGJU APP 130.0  
228.9  
GWANGJU TWR 118.05  
254.6

**GWANGJU/Gwangju(RKJJ)**  
**ASR RWY 04R**

Note : Approach and circle to land under U.S. TERPS.

**ELEV, ALT IN FEET**  
**DIST IN NM**  
**BRG ARE MAG**  
**VAR 8° W**



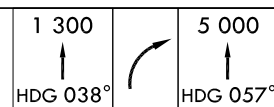
**NOTE :**  
OBST 837 ft was not considered as final APCH controlling OBST due to close to FAF.

**NOT TO SCALE**

**MISSED APPROACH**

Climb HDG 038° to 1 300 ft, then climbing right turn HDG 057° maintain 5 000 ft and assigned HDG for radar vector.

TRANSITION ALT 14 000  
TRANSITION LVL FL 140



	IF 10 NM from ASR 2 500		FAF 6.0 NM from THR 2 000		MAPt 1.0 NM from THR 1 300		RWY 04R		VDA 2.99° TCH 51	
	3.1 NM		5.0 NM		1.0 NM					
CATEGORY	A		B		C		D		E	
S-ASR 04R	560/40		514(600-3/4)		560/55		514(600-1)			
S-ASR 04R (ALS INOP)	560/60		514(600-1 1/4)		560-1 3/8		514(600-1 3/8)			
CIRCLING*	720-1 1/4 672(700-1 1/4)		1 140-1 1/2 1 092(1 100-1 1/2)		1 140-3 1 092(1 100-3)		1 380-3 1 332(1 400-3)		1 460-3 1 412(1 500-3)	

\* Circling not authorized for west of RWY 04-22.

Change : Page control.

**OFFICE OF CIVIL AVIATION**

**AIRAC AIP AMDT 1/23**  
**Effective : 1600UTC 22 FEB 2023**



**INTENTIONALLY**

**LEFT**

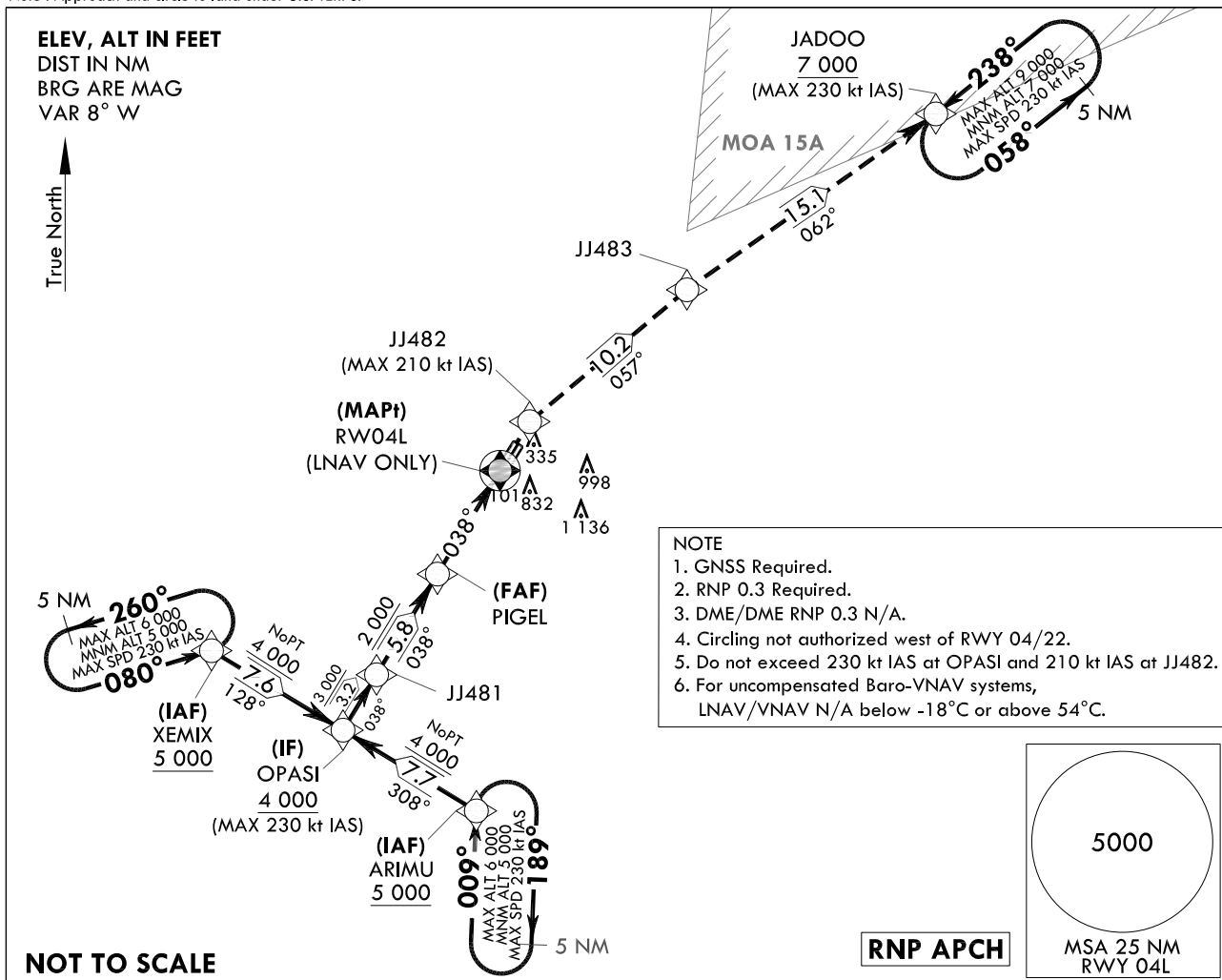
**BLANK**





**AERODROME ELEV 48 ft**  
HEIGHTS RELATED TO  
THR RWY 04L - ELEV **44 ft**  
HIGHEST ELEV TDZ **46 ft**

Note : Approach and circle to land under U.S. TERPS.

GWANGJU APP	130.0
	228.9
GWANGJU TWR	118.05
	254.6

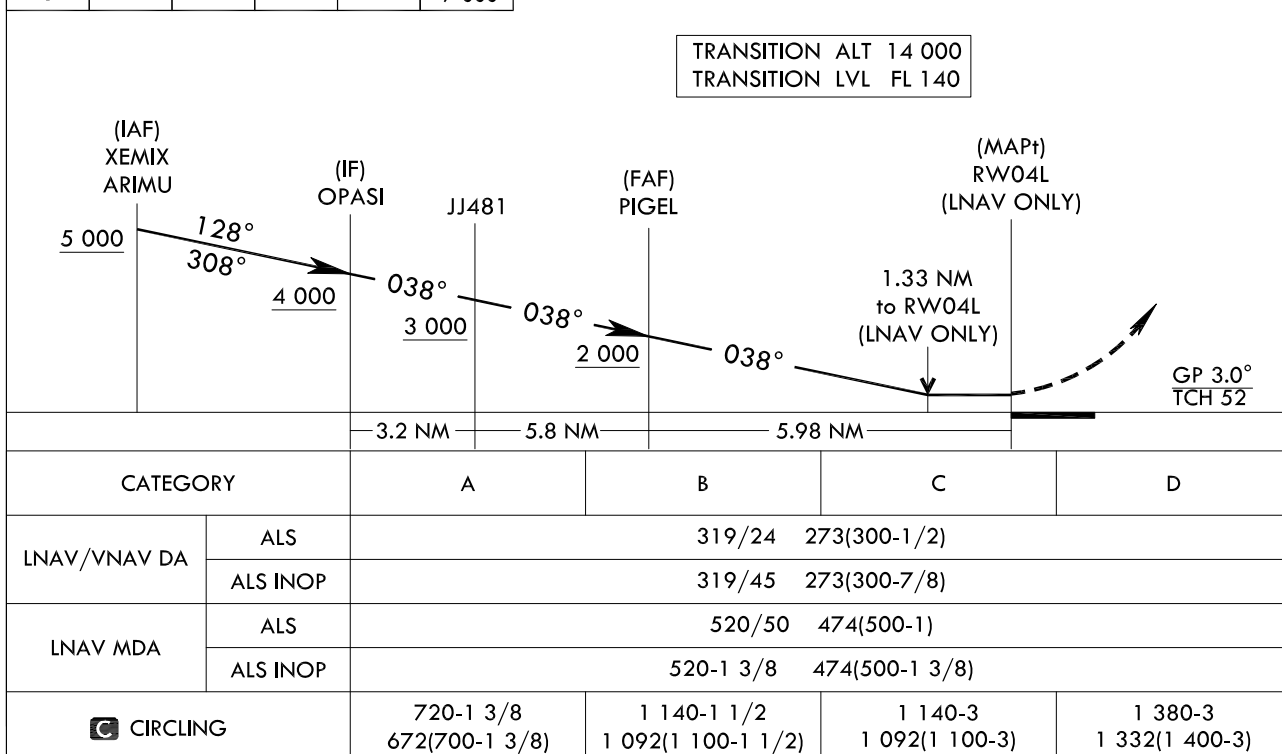
**GWANGJU/Gwangju(RKJJ)**  
**RNP RWY 04L**



7 000	JJ482	TR	JJ483	TR	JAD00
		057°		062°	
					7 000

### MISSED APPROACH

Climb to 7 000 ft on direct to JJ482 and track 057° to JJ483 and track 062° to JAD00 and hold, continue climb-in-hold to 7 000 ft.



Change : Information of fix names(XEROX → XEMIX, BUDLE → OPASI, NOVEM → ARIMU, TIGER → PIGEL).

GWANGJU/Gwangju(RKJJ)  
RNP RWY 04L

## AERONAUTICAL DATA TABULATION

## Instrument Approach Procedure Coding Tables

## RNP RWY 04L - via XEMIX to OPASI(IF)

Serial Number	Path Descriptor	Waypoint Identifier	Fly-over	Course/Track M(T)	Distance (NM)	Turn direction	Altitude (ft)	Speed (kt)	Coordinates	VPA/ TCH	Navigation specification	Remarks
001	IF	XEMIX	-	-	-	-	+5 000	-230	34°57'41.4"N 126°30'53.8"E	-	RNP APCH	IAF
002	TF	OPASI	-	128 (119.8)	7.6	-	+4 000	-230	34°53'54.5"N 126°38'55.1"E	-	RNP APCH	IF NoPT

## RNP RWY 04L - via ARIMU to OPASI(IF)

Serial Number	Path Descriptor	Waypoint Identifier	Fly-over	Course/Track M(T)	Distance (NM)	Turn direction	Altitude (ft)	Speed (kt)	Coordinates	VPA/ TCH	Navigation specification	Remarks
001	IF	ARIMU	-	-	-	-	+5 000	-230	34°50'04.0"N 126°47'02.3"E	-	RNP APCH	IAF
002	TF	OPASI	-	308 (299.9)	7.7	-	+4 000	-230	34°53'54.5"N 126°38'55.1"E	-	RNP APCH	IF NoPT

## RNP RWY 04L - via OPASI(IF) to MAHF

Serial Number	Path Descriptor	Waypoint Identifier	Fly-over	Course/Track M(T)	Distance (NM)	Turn direction	Altitude (ft)	Speed (kt)	Coordinates	VPA/ TCH	Navigation specification	Remarks
001	TF	OPASI	-	-	-	-	+4 000	-230	34°53'54.5"N 126°38'55.1"E	-	RNP APCH	IF
002	TF	JJ481	-	038 (029.8)	3.2	-	+3 000	-	34°56'41.3"N 126°40'51.3"E	-	RNP APCH	-
003	TF	PIGEL	-	038 (029.9)	5.8	-	+2 000	-	35°01'44.8"N 126°44'23.0"E	-3.0/52	RNP APCH	FAF
004	TF	RW04L	Y	038 (029.9)	6.0	-	-	-	35°06'56.2"N 126°48'00.8"E	-	RNP APCH	MAPt LNAV ONLY
005	DF	JJ482	-	-	-	-	-	-210	35°09'23.8"N 126°49'44.2"E	-	RNP APCH	-
005	TF	JJ483	-	057 (048.7)	10.2	-	-	-	35°16'05.6"N 126°59'03.3"E	-	RNP APCH	-
006	TF	JADOO	-	062 (053.6)	15.1	-	+7 000	-230	35°25'02.6"N 127°13'54.1"E	-	RNP APCH	-

## HOLDING PROCEDURE

Holding Identification	Path Descriptor	Waypoint Identifier	Fly-over	Course/Track M(T)	Distance (NM)	Turn direction	Altitude (ft)	Speed (kt)	Coordinates	VPA/ TCH	Navigation specification	Remarks
RNP RWY 04L	HM	ARIMU	-	009 (000.6)	5.0	R	-6 000 +5 000	-230	34°50'04.0"N 126°47'02.3"E	-	RNAV 1	-
	HM	XEMIX	-	080 (071.6)	5.0	L	-6 000 +5 000	-230	34°57'41.4"N 126°30'53.8"E	-	RNAV 1	-
	HM	JADOO	-	238 (229.6)	5.0	L	-9 000 +7 000	-230	35°25'02.6"N 127°13'54.1"E	-	RNAV 1	-

Change : Information of fix names(XEROX → XEMIX, BUDLE → OPASI, NOVEM → ARIMU, TIGER → PIGEL).

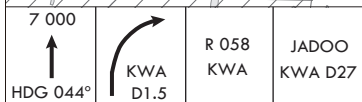
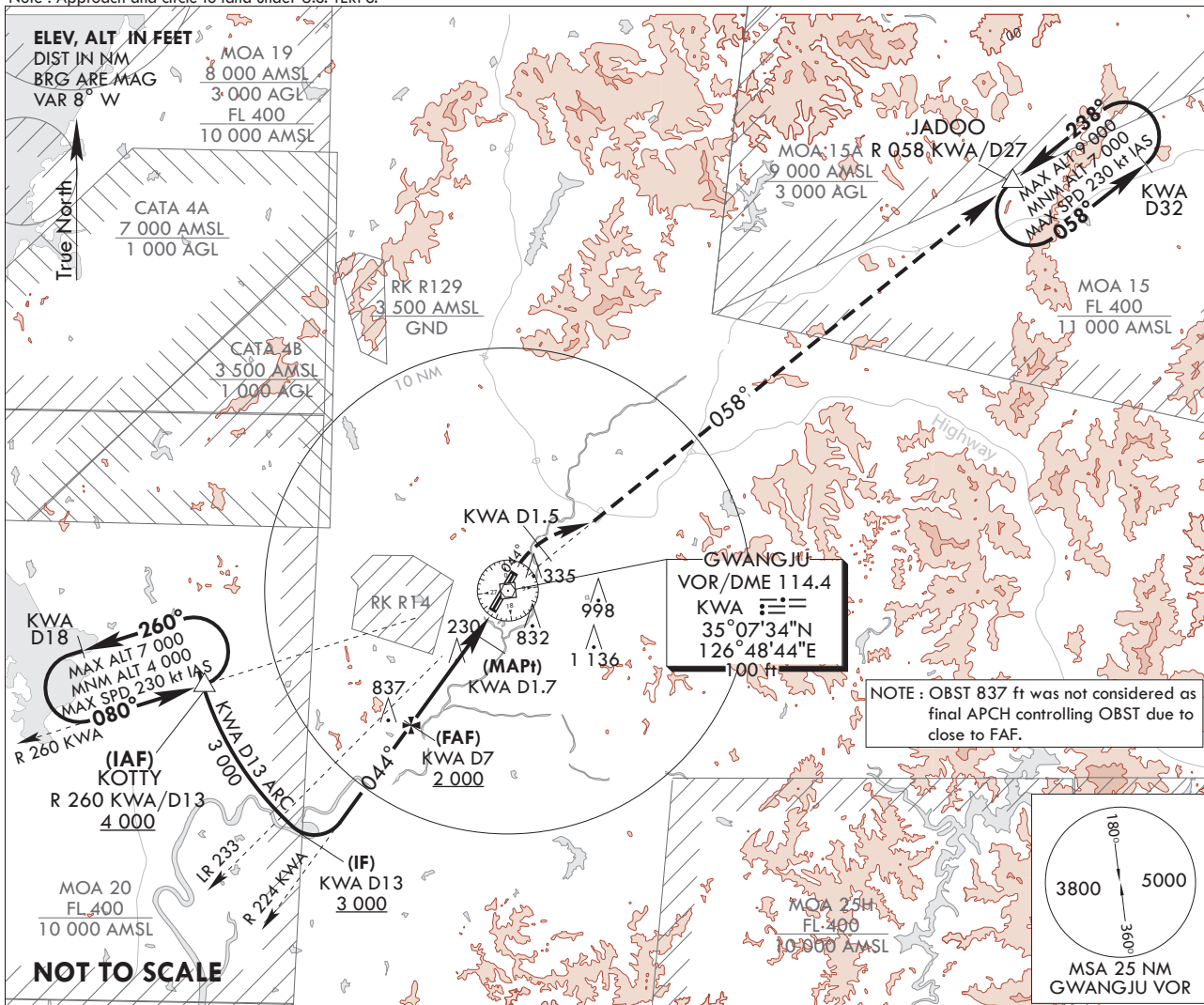
**INSTRUMENT  
APPROACH  
CHART**

**AERODROME ELEV 48 ft**  
HEIGHTS RELATE TO  
THR RWY 04L - ELEV **44 ft**  
HIGHEST ELEV TDZ **46 ft**

GWANGJU APP 130.0  
228.9  
GWANGJU TWR 118.05  
254.6

**GWANGJU/Gwangju(RKJJ)**  
**VOR/DME RWY 04L**

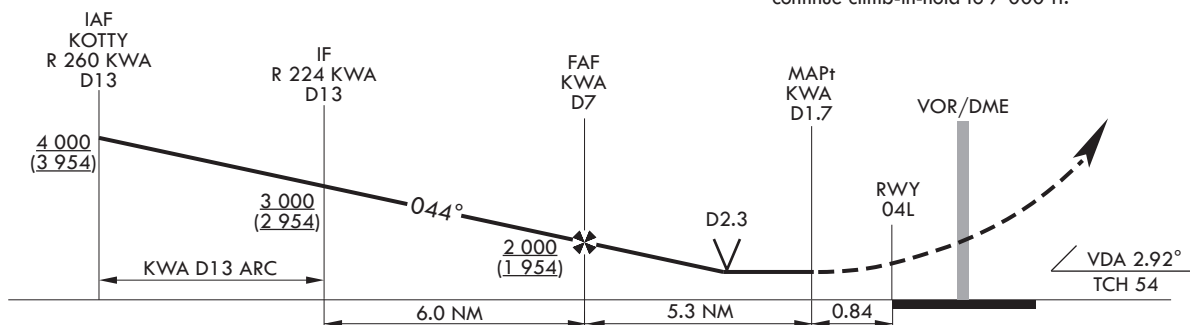
Note : Approach and circle to land under U.S. TERPS.



TRANSITION ALT 14 000  
TRANSITION LVL FL 140

**MISSED APPROACH**

Climb to 7 000 ft on HDG 044° to KWA D1.5, and climbing right turn to intercept R 058 KWA and track on R 058 KWA to JADOO and hold, continue climb-in-hold to 7 000 ft.



CATEGORY	A	B	C	D
S-VOR 04L	560/40 514(600-3/4)		560/55 514(600-1)	
S-VOR 04L (ALS INOP)	560/55 514(600-1)		560-1 3/8 514(600-1 3/8)	
CIRCLING*	720-1 672(700-1)	1 140-1 1/2 1 092(1 100-1 1/2)	1 140-3 1 092(1 100-3)	1 380-3 1 332(1 400-3)

\*Circling not authorized for west of RWY 04-22.

Change : Page control.

**INTENTIONALLY**

**LEFT**

**BLANK**

**INSTRUMENT  
APPROACH  
CHART**

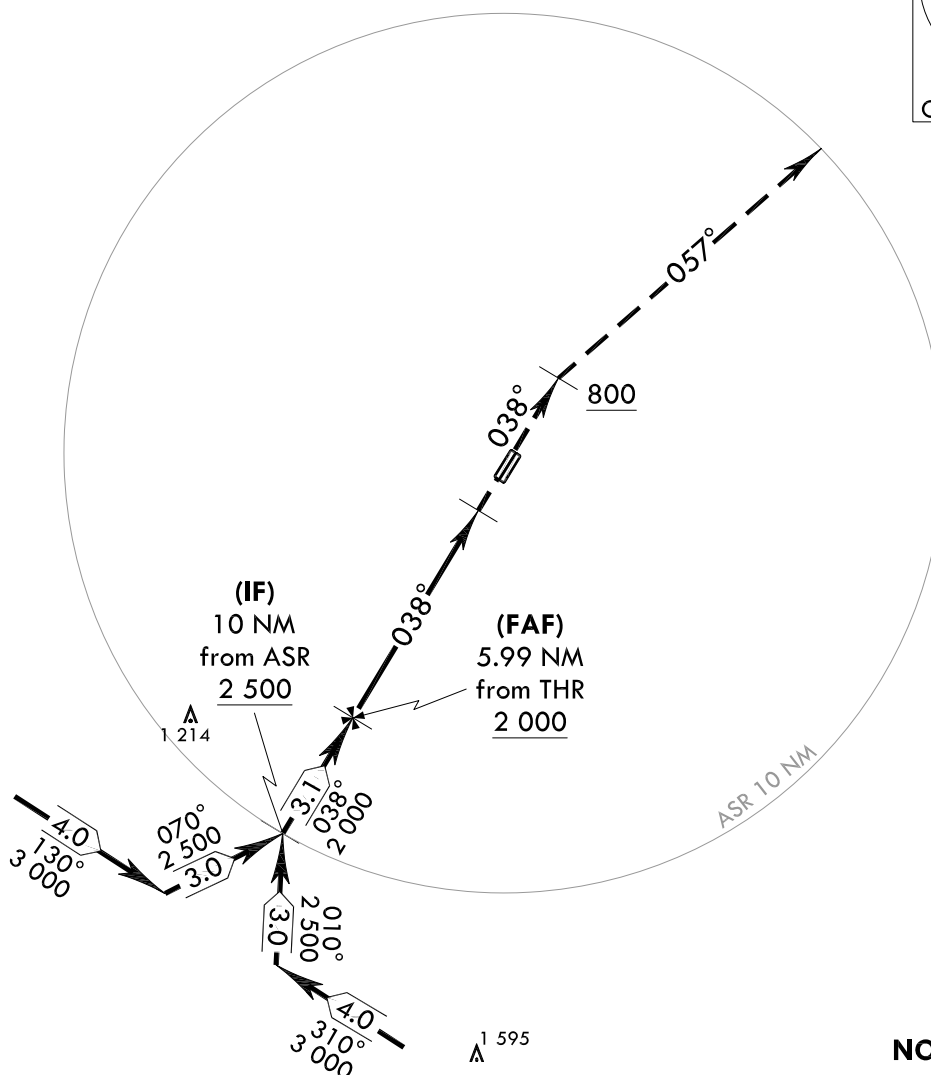
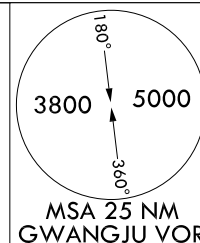
**AERODROME ELEV 48 ft**  
HEIGHTS RELATED TO  
THR RWY 04L - ELEV **44 ft**  
HIGHEST ELEV TDZ **46 ft**

GWANGJU APP 130.0  
228.9  
GWANGJU TWR 118.05  
254.6

**GWANGJU/Gwangju(RKJJ)**  
**PAR RWY 04L**

Note : Approach and circle to land under U.S. TERPS.

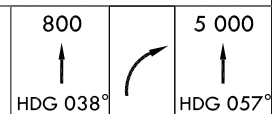
**ELEV, ALT IN FEET**  
**DIST IN NM**  
**BRG ARE MAG**  
**VAR 8° W**



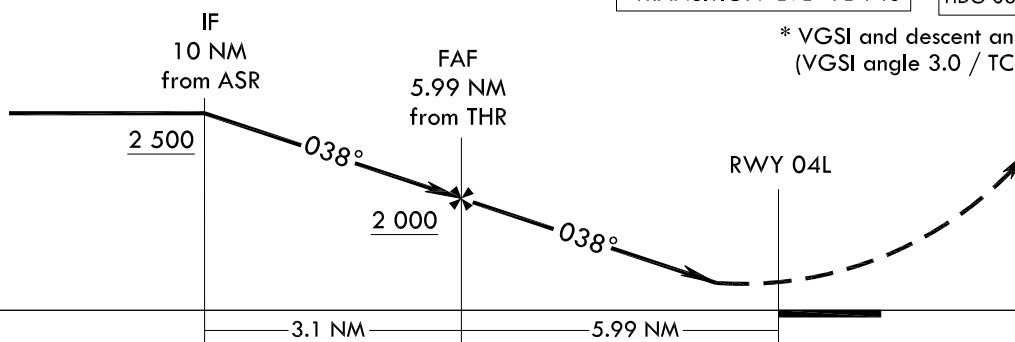
**MISSED APPROACH**

Climb HDG 038° to 800 ft, then climbing right turn HDG 057° maintain 5 000 ft and assigned HDG for radar vector.

TRANSITION ALT 14 000  
TRANSITION LVL FL 140



\* VGSI and descent angle not coincident.  
(VGSI angle 3.0 / TCH 54)



CATEGORY	A	B	C	D	E
S-PAR 04L		246/24	200(200-1/2)		
S-PAR 04L (ALS INOP)		246/40	200(200-3/4)		

\* Circling not authorized.

Change : Page control.

**INTENTIONALLY**

**LEFT**

**BLANK**



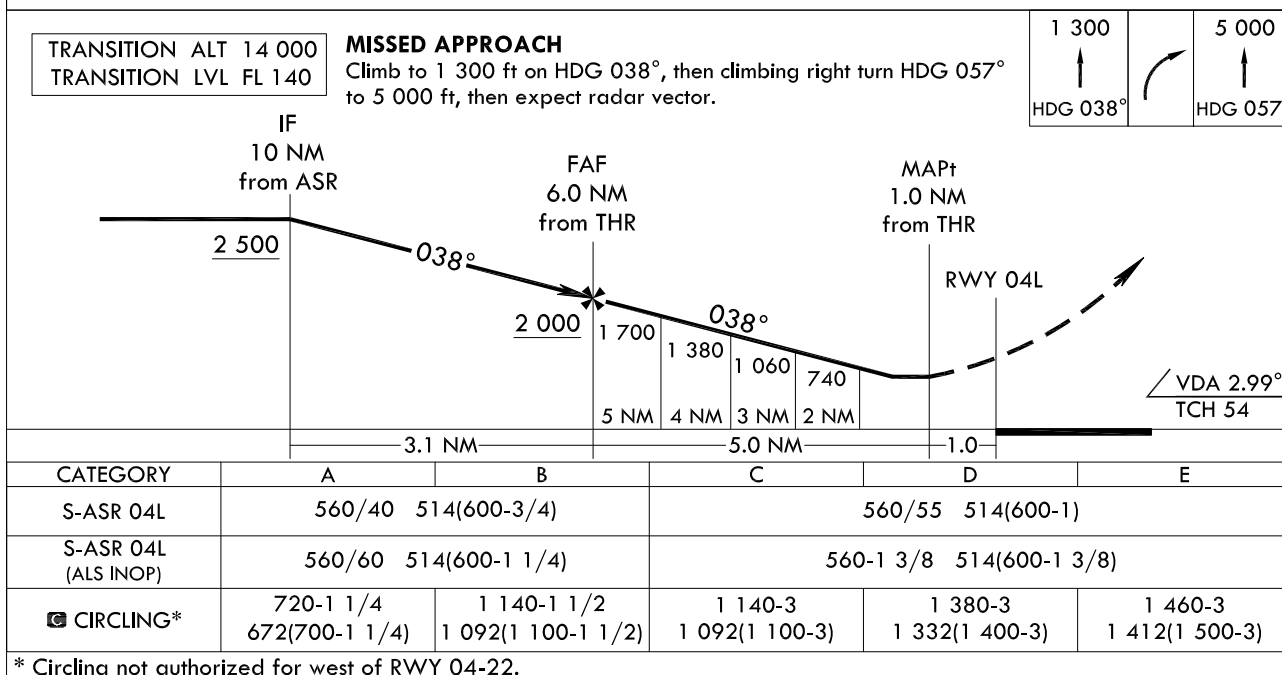
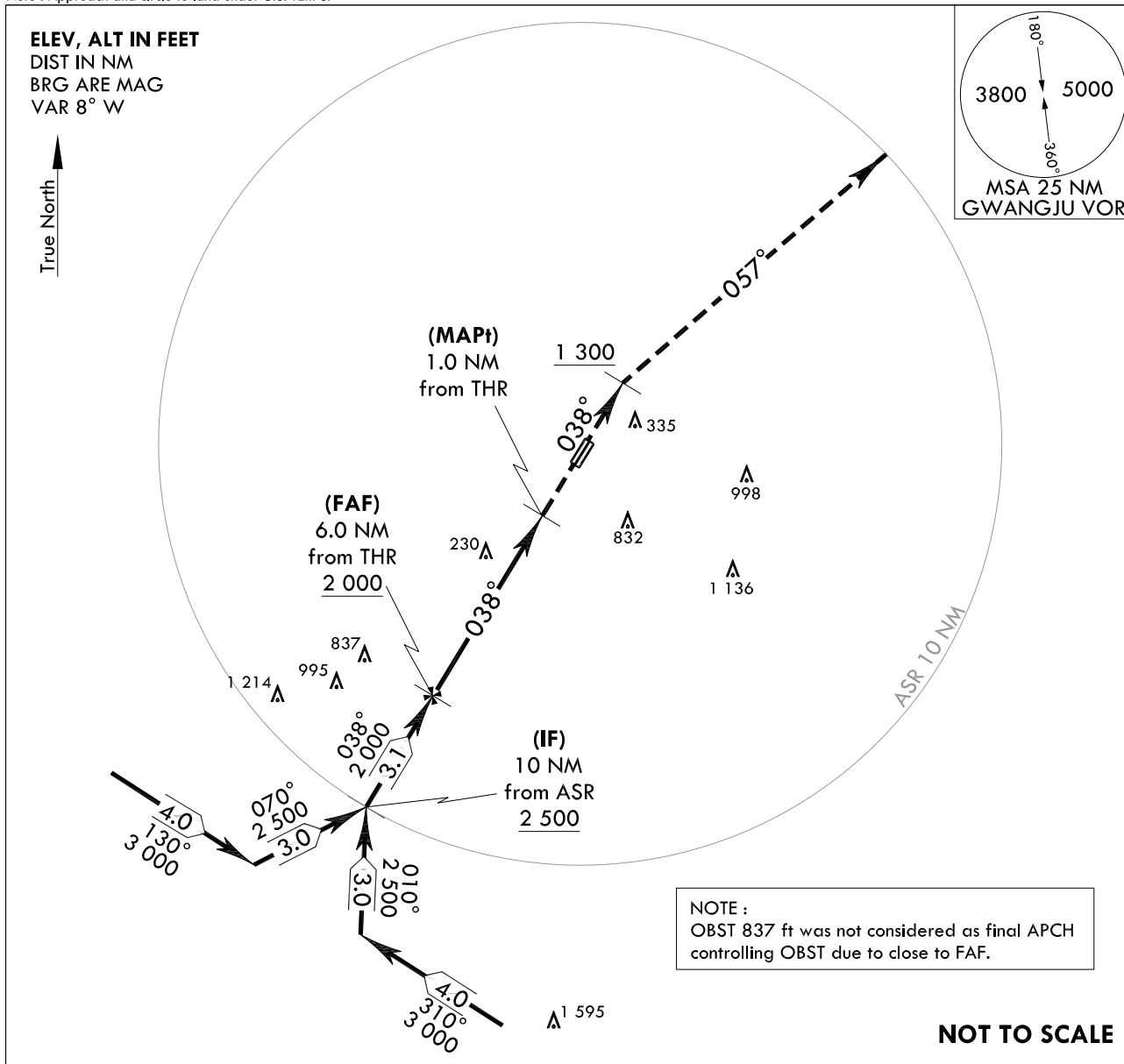
**INSTRUMENT  
APPROACH  
CHART**

**AERODROME ELEV 48 ft**  
HEIGHTS RELATED TO  
THR RWY 04L - ELEV **44 ft**  
HIGHEST ELEV TDZ **46 ft**

GWANGJU APP 130.0  
228.9  
GWANGJU TWR 118.05  
254.6

**GWANGJU/Gwangju(RKJJ)**  
**ASR RWY 04L**

Note : Approach and circle to land under U.S. TERPS.



\* Circling not authorized for west of RWY 04-22.

Change : Page control.

**OFFICE OF CIVIL AVIATION**

**AIRAC AIP AMDT 1/23**  
**Effective : 1600UTC 22 FEB 2023**

**INTENTIONALLY**

**LEFT**

**BLANK**

**INSTRUMENT  
APPROACH  
CHART**

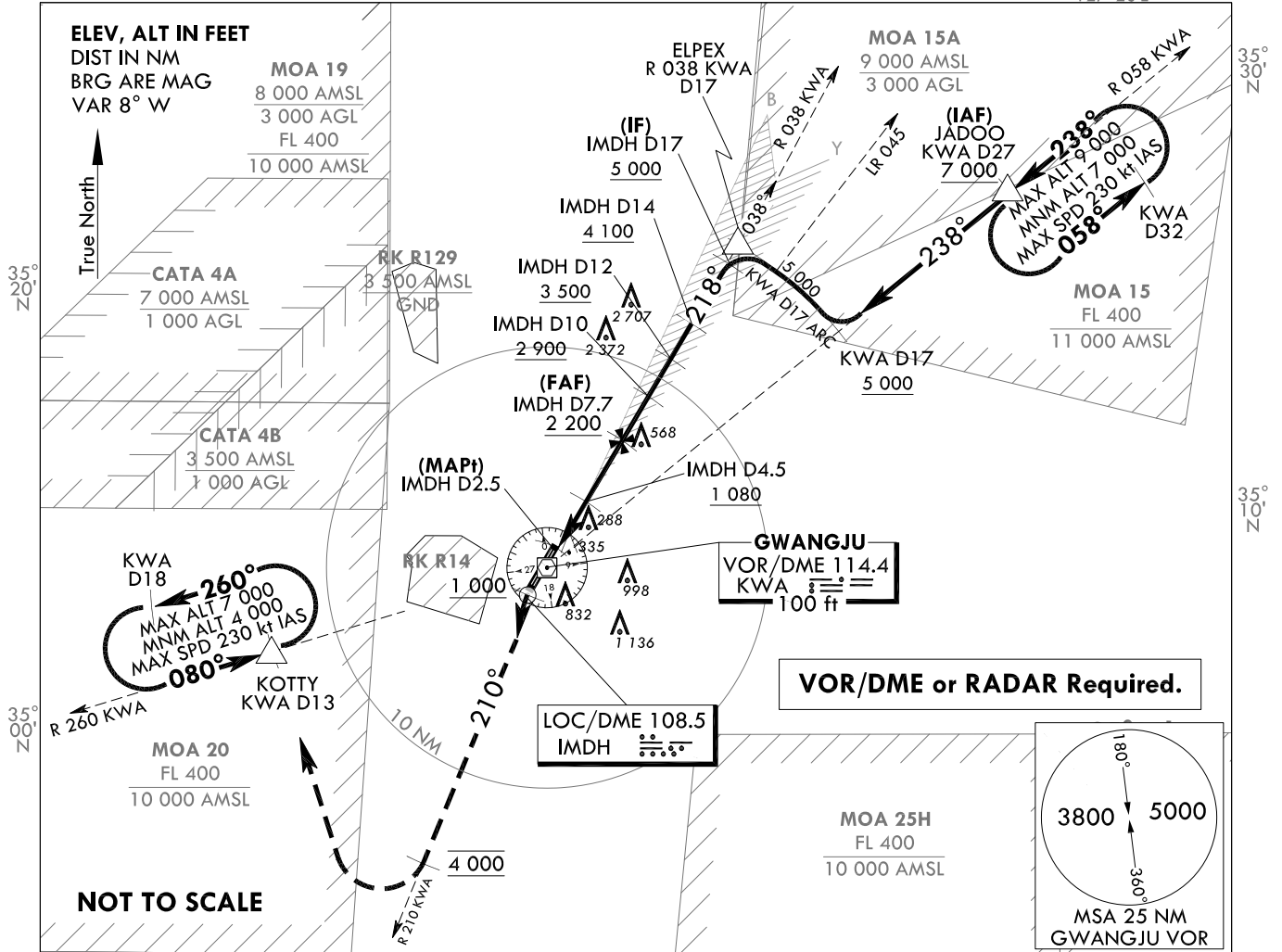
**AERODROME ELEV 48 ft**  
HEIGHTS RELATED TO  
THR RWY 22L - ELEV 46 ft  
HIGHEST ELEV TDZ 48 ft

GWANGJU APP 130.0  
228.9  
GWANGJU TWR 118.05  
254.6

**GWANGJU/Gwangju(RKJJ)**  
**LOC/DME RWY 22L**

Note : Approach and circle to land under U.S. TERPS.

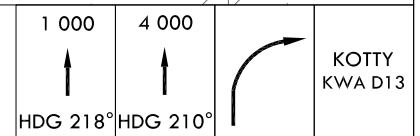
127°20'E



**MISSED APPROACH**

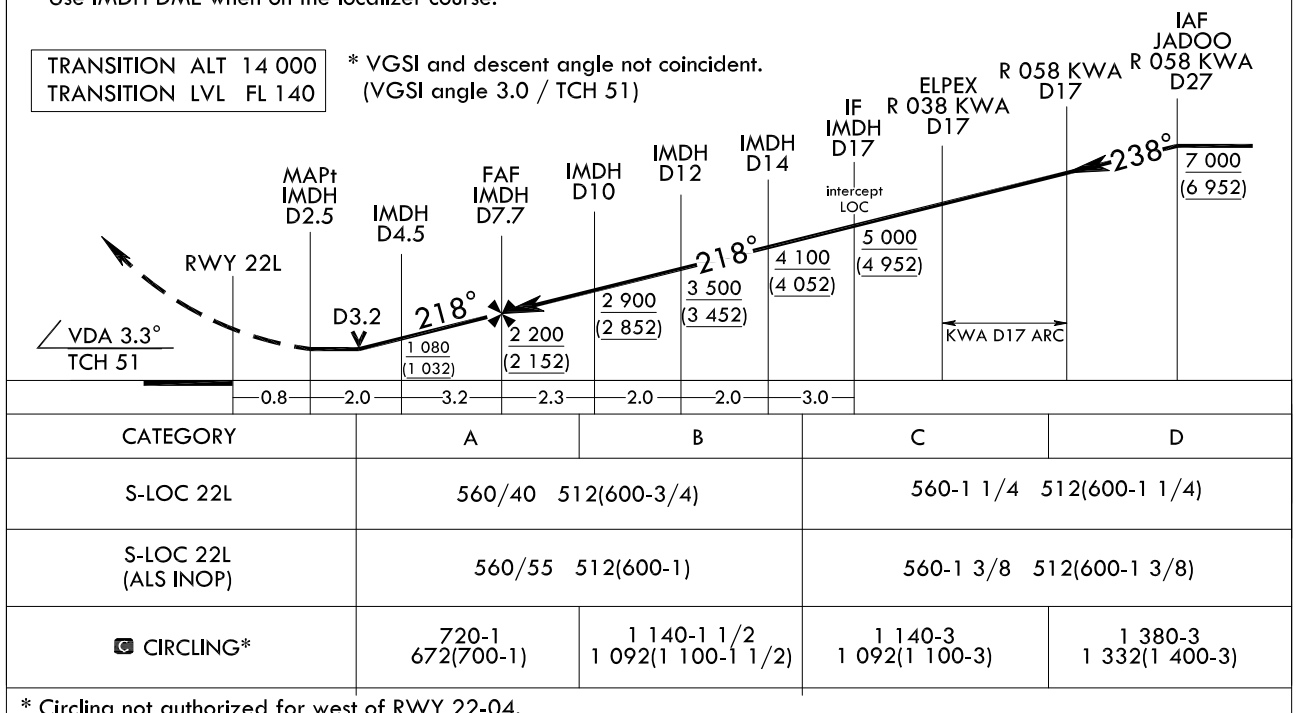
Climb to 1 000 ft on HDG 218°, then climbing left turn HDG 210° to 4 000 ft, then right turn direct to KOTTY and hold.

\* Use IMDH DME when on the localizer course.



TRANSITION ALT 14 000  
TRANSITION LVL FL 140

\* VGSI and descent angle not coincident.  
(VGSI angle 3.0 / TCH 51)



\* Circling not authorized for west of RWY 22-04.

Change : Withdrawal of symbol for glide slope.

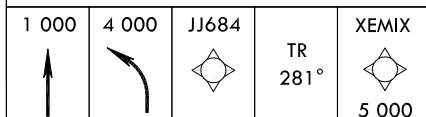
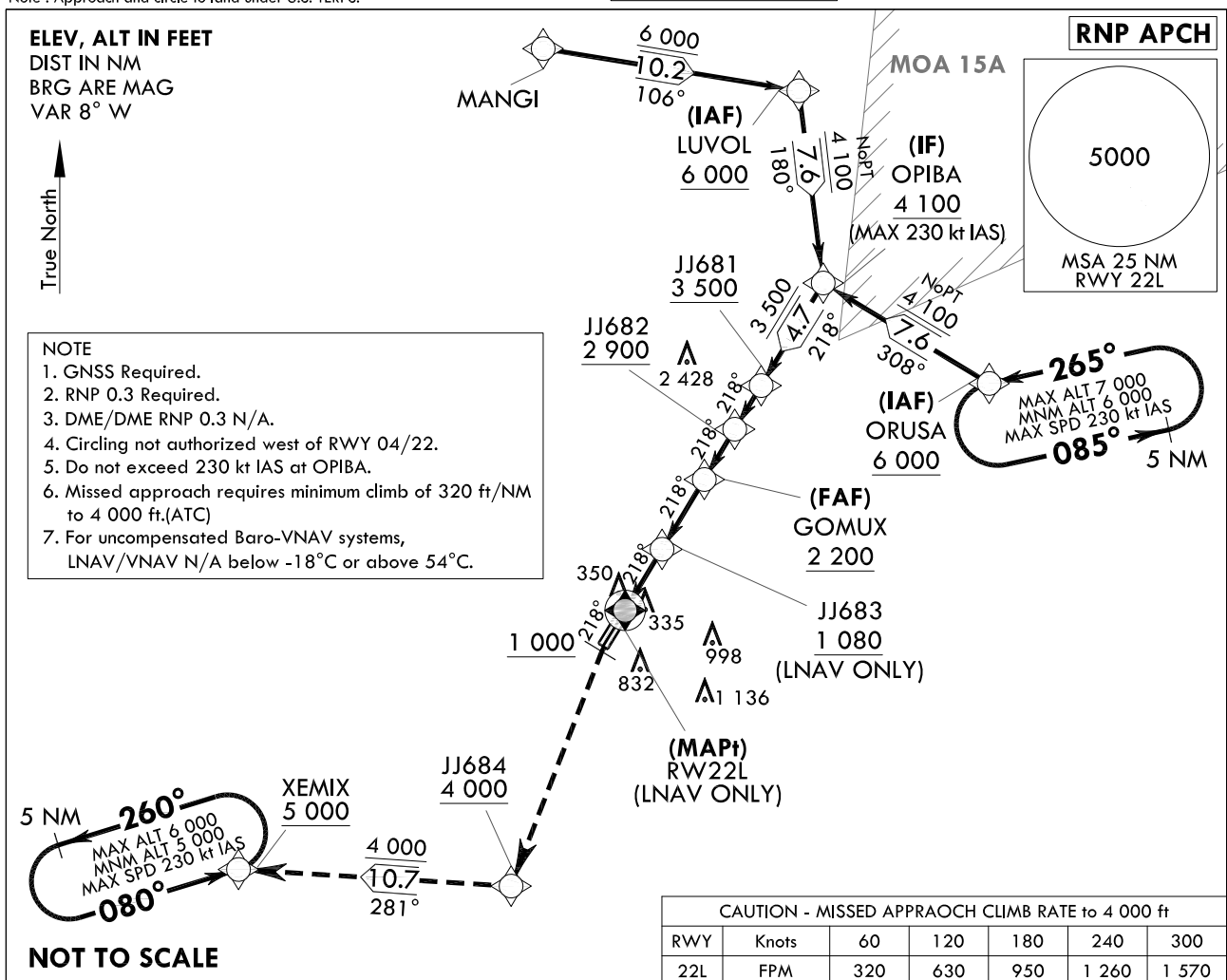
**INTENTIONALLY**

**LEFT**

**BLANK**

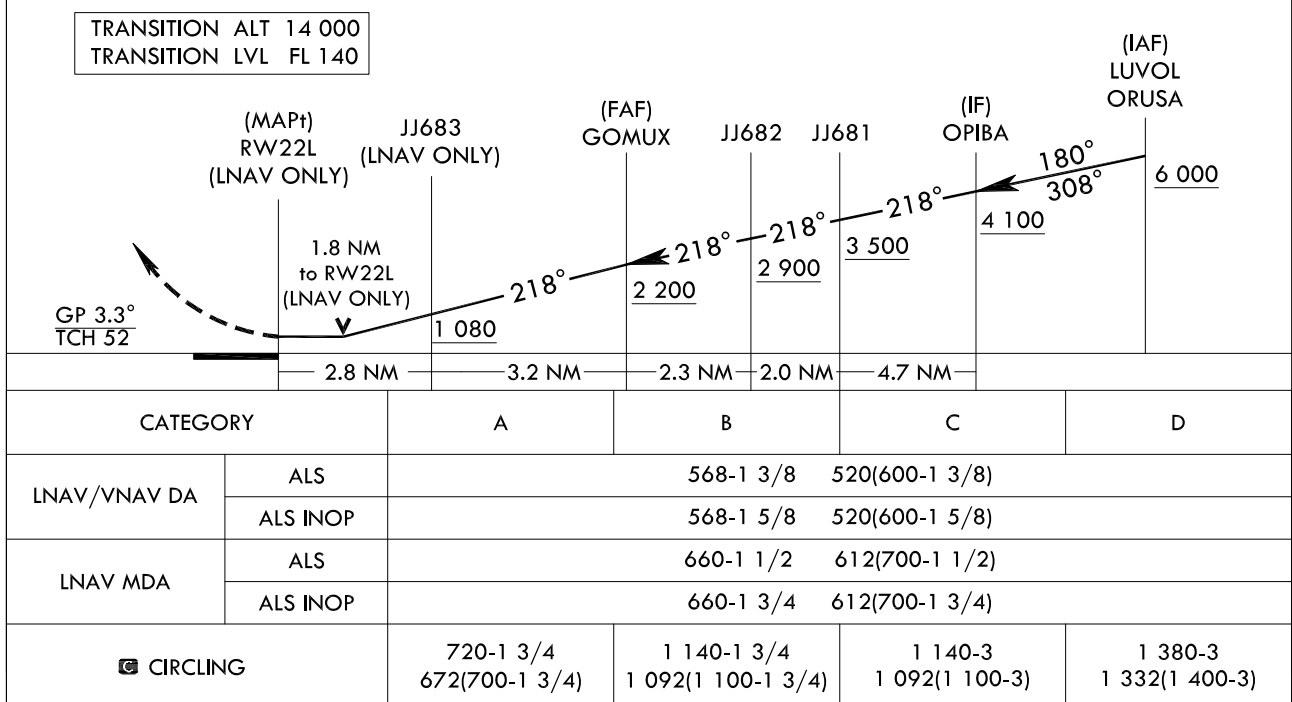
INSTRUMENT  
APPROACH  
CHARTAERODROME ELEV 48 ft  
HEIGHTS RELATED TO  
THR RWY 22L - ELEV 46 ft  
HIGHEST ELEV TDZ 48 ftGWANGJU APP 130.0  
228.9  
GWANGJU TWR 118.05  
254.6GWANGJU/Gwangju(RKJJ)  
RNP RWY 22L

Note : Approach and circle to land under U.S. TERPS.

**MISSED APPROACH**

Climb HDG 218° to 1 000 ft, then climbing left turn direct to JJ684 at or above 4 000 ft, then track 281° to XEMIX at or above 5 000 ft and hold.

\* VGSI and descent angle not coincident (VGSI Angle 3.0/TCH 51).



Change : Information of fix names(SERAN → LUVOL, BIENN → OPIBA, FRISA → ORUSA, GOEUL → GOMUX, XEROX → XEMIX).

## AERONAUTICAL DATA TABULATION

## Instrument Approach Procedure Coding Tables

## Feeder Route - via MANGI to LUVOL(IAF)

Serial Number	Path Descriptor	Waypoint Identifier	Fly- over	Course/Track M(°T)	Distance (NM)	Turn direction	Altitude (ft)	Speed (kt)	Coordinates	VPA/TCH	Navigation specification	Remarks
001	-	MANGI	-	-	-	-	-	-	35°30'11.3"N 126°44'31.7"E	-	RNAV 1	-
002	TF	LUVOL	-	106 (098.0)	10.2	-	+6 000	-	35°28'45.5"N 126°56'50.7"E	-	RNAV 1	IAF

## RNP RWY 22L - via LUVOL to OPIBA(IAF)

Serial Number	Path Descriptor	Waypoint Identifier	Fly- over	Course/Track M(°T)	Distance (NM)	Turn direction	Altitude (ft)	Speed (kt)	Coordinates	VPA/TCH	Navigation specification	Remarks
001	IF	LUVOL	-	-	-	-	+6 000	-230	35°28'45.5"N 126°56'50.7"E	-	RNP APCH	IAF
002	TF	OPIBA	-	180 (171.6)	7.6	-	+4 100	-230	35°21'13.7"N 126°58'12.2"E	-	RNP APCH	IF NoPT

## RNP RWY 22L - via ORUSA to OPIBA(IAF)

Serial Number	Path Descriptor	Waypoint Identifier	Fly- over	Course/Track M(°T)	Distance (NM)	Turn direction	Altitude (ft)	Speed (kt)	Coordinates	VPA/TCH	Navigation specification	Remarks
001	IF	ORUSA	-	-	-	-	+6 000	-230	35°17'25.0"N 127°06'14.5"E	-	RNP APCH	IAF
002	TF	OPIBA	-	308 (300.1)	7.6	-	+4 100	-230	35°21'13.7"N 126°58'12.2"E	-	RNP APCH	IF NoPT

## RNP RWY 22L - via OPIBA(IAF) to MAHF

Serial Number	Path Descriptor	Waypoint Identifier	Fly- over	Course/Track M(°T)	Distance (NM)	Turn direction	Altitude (ft)	Speed (kt)	Coordinates	VPA/TCH	Navigation specification	Remarks
001	TF	OPIBA	-	-	-	-	+4 100	-230	35°21'13.7"N 126°58'12.2"E	-	RNP APCH	IF
002	TF	JJ681	-	218 (210.0)	4.7	-	+3 500	-	35°17'09.1"N 126°55'19.9"E	-	RNP APCH	-
003	TF	JJ682	-	218 (210.0)	2.0	-	+2 900	-	35°15'25.0"N 126°54'06.6"E	-	RNP APCH	-
004	TF	GOMUX	-	218 (210.0)	2.3	-	+2 200	-	35°13'25.3"N 126°52'42.5"E	-3.3/52	RNP APCH	FAF
005	TF	JJ683	-	218 (210.0)	3.2	-	+1 080	-	35°10'38.6"N 126°50'45.5"E	-	RNP APCH	LNAV ONLY
006	TF	RW22L	Y	218 (209.9)	2.8	-	-	-	35°08'12.8"N 126°49'03.3"E	-	RNP APCH	MAPt LNAV ONLY
007	VA	1 000 ft	-	-	-	-	+1 000	-	-	-	RNP APCH	-
008	DF	JJ684	-	-	-	-	+4 000	-	34°57'17.9"N 126°43'53.3"E	-	RNP APCH	CG 320 ft/NM to 4 000 ft
009	TF	XEMIX	-	281 (272.2)	10.7	-	+5 000	-	34°57'41.4"N 126°30'53.8"E	-	RNP APCH	-

## HOLDING PROCEDURE

Holding Identification	Path Descriptor	Waypoint Identifier	Fly- over	Course/Track M(°T)	Distance (NM)	Turn direction	Altitude (ft)	Speed (kt)	Coordinates	VPA/TCH	Navigation specification	Remarks
RNP RWY 22L	HM	ORUSA	-	265 (256.6)	5.0	L	-7 000 +6 000	-230	35°17'25.0"N 127°06'14.5"E	-	RNAV 1	-
	HM	XEMIX	-	080 (071.6)	5.0	L	-6 000 +5 000	-230	34°57'41.4"N 126°30'53.8"E	-	RNAV 1	-

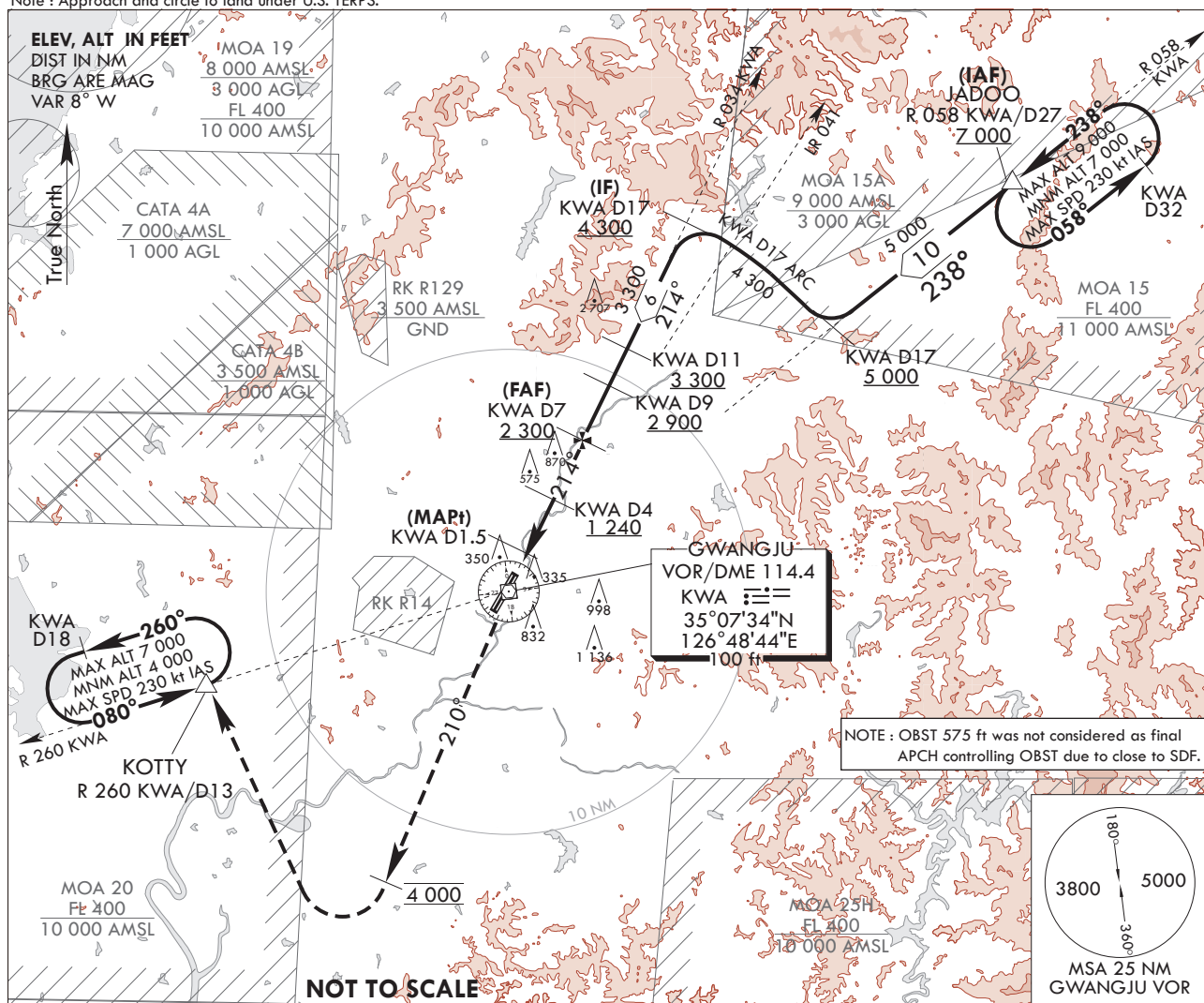
Change : Information of fix names(SERAN → LUVOL, BIENN → OPIBA, FRISA → ORUSA, GOEUL → GOMUX, XEROX → XEMIX).

**AERODROME ELEV 48 ft**  
HEIGHTS RELATE TO  
THR RWY 22L - ELEV **46 ft**  
HIGHEST ELEV TDZ **48 ft**

GWANGJU APP	130.0
	228.9
GWANGJU TWR	118.05
	254.6

**GWANGJU/Gwangju(RKJJ)**  
**VOR/DME RWY 22L**

Note : Approach and circle to land under U.S. TERPS.

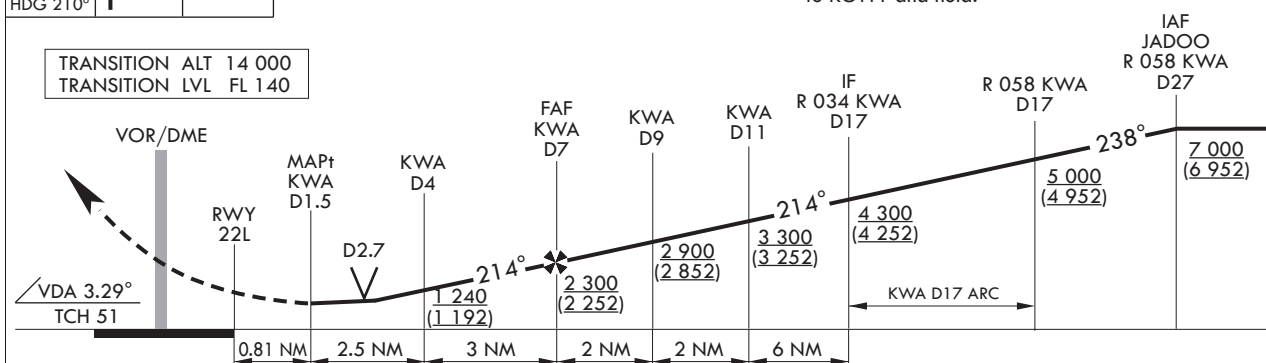



4 000 ↑ HDG 210°		KOTTY KWA D13
------------------------	--	------------------

\* VGSI and descent angle not coincident (VGSI angle 3.0/TCH 51).

### MISSED APPROACH

Climb to 4 000 ft on HDG 210°, then right turn direct to KOTTY and hold.



CATEGORY	A	B	C	D
S-VOR 22L	740/40 692(700-3/4)		740-1 3/4 692(700-1 3/4)	
S-VOR 22L (ALS INOP)	740/55 692(700-1)		740-2 692(700-2)	
 CIRCLING*	740-1 692(700-1)	1 140-1 1/2 1 092(1 100-1 1/2)	1 140-3 1 092(1 100-3)	1 380-3 1 332(1 400-3)

\* Circling not authorized for west of RWY 22-04.

Change : Page control.



INTENTIONALLY

LEFT

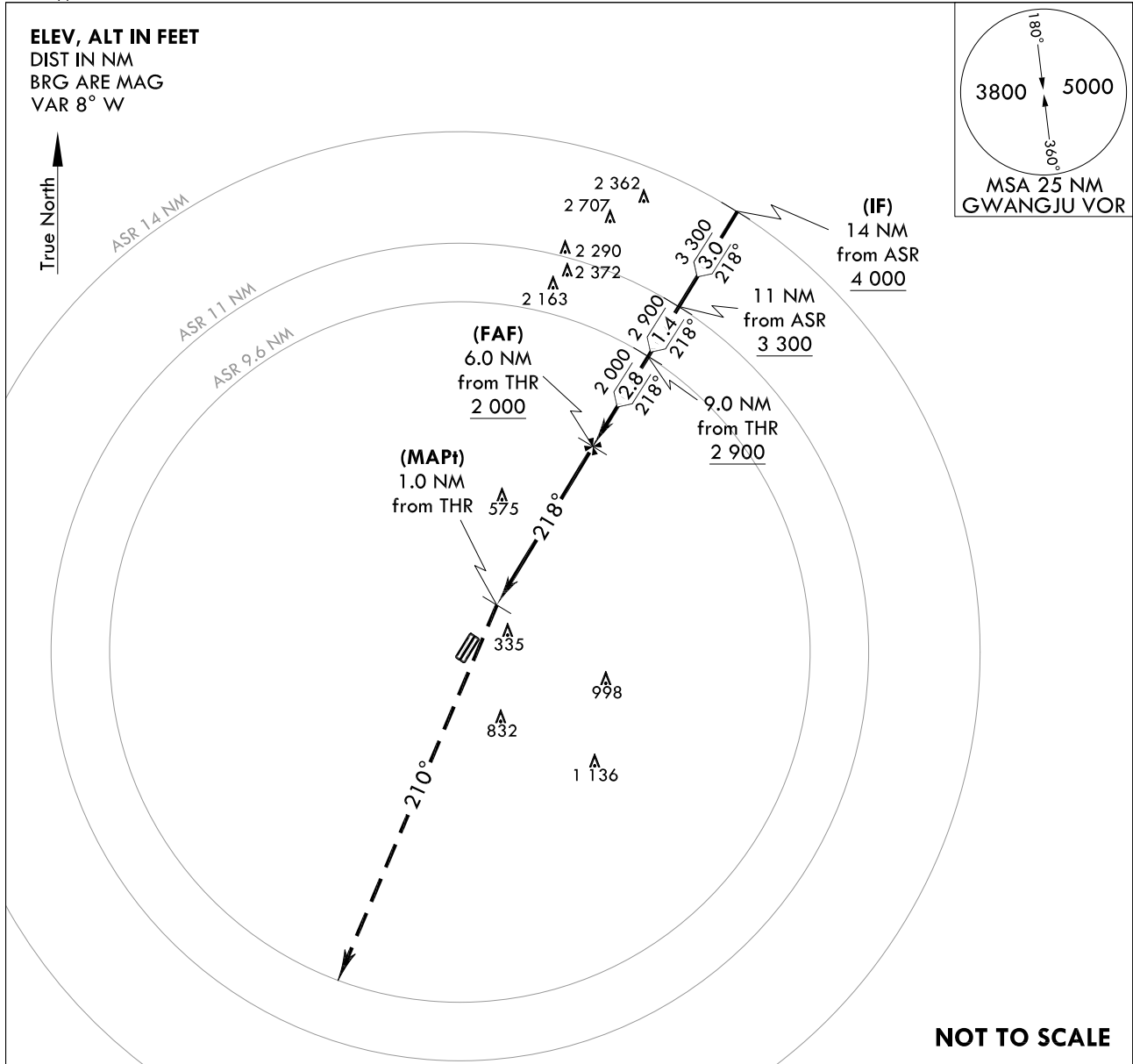
BLANK

**AERODROME ELEV 48 ft**  
HEIGHTS RELATED TO  
THR RWY 22L - ELEV **46 ft**  
HIGHEST ELEV TDZ **48 ft**

GWANGJU APP	130.0
	228.9
GWANGJU TWR	118.05
	254.6

GWANGJU/Gwangju(RKJJ)  
ASR RWY 22L

Note : Approach and circle to land under U.S. TERPS.



**MISSED APPROACH**  
Climb HDG 210° to 5 000 ft, then expect radar vector.

5 000  
↑  
HDG 210°

TRANSITION ALT 14 000  
TRANSITION LVL FL 140

CATEGORY	A	B	C	D	E
S-ASR 22L	860/55 812(900-1)		860-2 812(900-2)		
S-ASR 22L (ALS INOP)	860/60 812(900-1 1/4)		860-2 1/2 812(900-2 1/2)		
CIRCLING*	860-1 1/4 812(900-1 1/4)	1 140-1 1/2 1 092(1 100-1 1/2)	1 140-3 1 092(1 100-3)	1 380-3 1 332(1 400-3)	1 460-3 1 412(1 500-3)

\* Circling not authorized for west of RWY 22-04.

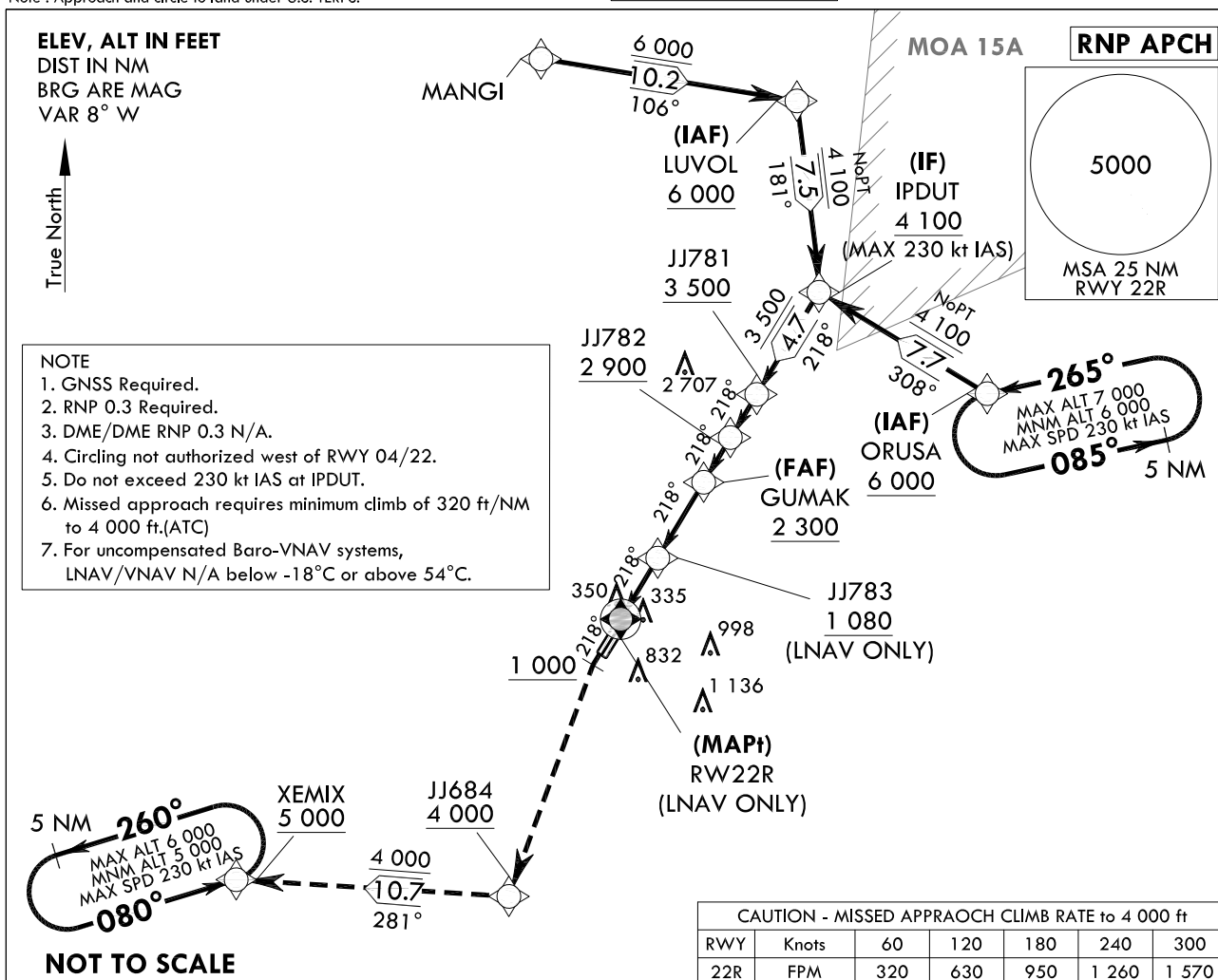
**INTENTIONALLY**

**LEFT**

**BLANK**

INSTRUMENT  
APPROACH  
CHARTAERODROME ELEV 48 ft  
HEIGHTS RELATED TO  
THR RWY 22R - ELEV 48 ft  
HIGHEST ELEV TDZ 48 ftGWANGJU APP 130.0  
228.9  
GWANGJU TWR 118.05  
254.6GWANGJU/Gwangju(RKJJ)  
RNP RWY 22R

Note : Approach and circle to land under U.S. TERPS.



1 000	4 000	JJ684	TR 281°	XEMIX 5 000
↑	↘	✧		✧

**MISSED APPROACH**  
Climb HDG 218° to 1 000 ft, then climbing left turn direct to JJ684 at or above 4 000 ft, then track 281° to XEMIX at or above 5 000 ft and hold.  
\* VGSI and descent angle not coincident (VGSI Angle 3.0/TCH 53).

TRANSITION ALT 14 000 TRANSITION LVL FL 140					
		(MAPt) RW22R (LNAV ONLY)	JJ783 (LNAV ONLY)	(FAF) GUMAK	JJ782 JJ781
		1.8 NM to RW22R (LNAV ONLY)	2 100	2 300	2 900 3 500
		GP 3.3° TCH 52	218°	218°	218°
		2.8 NM	3.48 NM	2.0 NM	2.0 NM 4.7 NM
		(IF) IPDUT	(IAF) LUVOL ORUSA		
		4 100	6 000		
		180°	308°		
CATEGORY		A	B	C	D
LNAV/VNAV DA	ALS	568-1 3/8		520(600-1 3/8)	
	ALS INOP	568-1 5/8		520(600-1 5/8)	
LNAV MDA	ALS	660-1 1/2		612(700-1 1/2)	
	ALS INOP	660-1 3/4		612(700-1 3/4)	
CIRCLING		720-1 3/4 672(700-1 3/4)	1 140-1 3/4 1 092(1 100-1 3/4)	1 140-3 1 092(1 100-3)	1 380-3 1 332(1 400-3)

Change : Information of fix names(SERAN → LUVOL, JEBEE → IPDUT, FRISA → ORUSA, KOMAK → GUMAK, XEROX → XEMIX).

GWANGJU/Gwangju(RKJJ)  
RNP RWY 22R

## AERONAUTICAL DATA TABULATION

## Instrument Approach Procedure Coding Tables

## Feeder Route - via MANGI to LUVOL(IAF)

Serial Number	Path Descriptor	Waypoint Identifier	Fly- over	Course/ Track M(°T)	Distance (NM)	Turn direction	Altitude (ft)	Speed (kt)	Coordinates	VPA/ TCH	Navigation specification	Remarks
001	-	MANGI	-	-	-	-	-	-	35°30'11.3"N 126°44'31.7"E	-	RNAV 1	-
002	TF	LUVOL	-	106 (098.0)	10.2	-	+6 000	-	35°28'45.5"N 126°56'50.7"E	-	RNAV 1	IAF

## RNP RWY 22R - via LUVOL to IPDUT(IF)

Serial Number	Path Descriptor	Waypoint Identifier	Fly- over	Course/ Track M(°T)	Distance (NM)	Turn direction	Altitude (ft)	Speed (kt)	Coordinates	VPA/ TCH	Navigation specification	Remarks
001	IF	LUVOL	-	-	-	-	+6 000	-230	35°28'45.5"N 126°56'50.7"E	-	RNP APCH	IAF
002	TF	IPDUT	-	181 (172.2)	7.5	-	+4 100	-230	35°21'16.8"N 126°58'05.5"E	-	RNP APCH	IF NoPT

## RNP RWY 22R - via ORUSA to IPDUT(IF)

Serial Number	Path Descriptor	Waypoint Identifier	Fly- over	Course/ Track M(°T)	Distance (NM)	Turn direction	Altitude (ft)	Speed (kt)	Coordinates	VPA/ TCH	Navigation specification	Remarks
001	IF	ORUSA	-	-	-	-	+6 000	-230	35°17'25.0"N 127°06'14.5"E	-	RNP APCH	IAF
002	TF	IPDUT	-	308 (300.1)	7.7	-	+4 100	-230	35°21'16.8"N 126°58'05.5"E	-	RNP APCH	IF NoPT

## RNP RWY 22R - via IPDUT(IF) to MAHF

Serial Number	Path Descriptor	Waypoint Identifier	Fly- over	Course/ Track M(°T)	Distance (NM)	Turn direction	Altitude (ft)	Speed (kt)	Coordinates	VPA/ TCH	Navigation specification	Remarks
001	TF	IPDUT	-	-	-	-	+4 100	-230	35°21'16.8"N 126°58'05.5"E	-	RNP APCH	IF
002	TF	JJ781	-	218 (210.0)	4.7	-	+3 500	-	35°17'12.3"N 126°55'13.2"E	-	RNP APCH	-
003	TF	JJ782	-	218 (210.0)	2.0	-	+2 900	-	35°15'28.1"N 126°54'00.0"E	-	RNP APCH	-
004	TF	GUMAK	-	218 (210.0)	2.0	-	+2 300	-	35°13'42.9"N 126°52'46.0"E	-3.3/52	RNP APCH	FAF
005	TF	JJ783	-	218 (210.0)	3.5	-	+1 080	-	35°10'41.8"N 126°50'38.9"E	-	RNP APCH	LNAV ONLY
006	TF	RW22R	Y	218 (209.9)	2.8	-	-	-	35°08'15.9"N 126°48'56.6"E	-	RNP APCH	MAPt LNAV ONLY
007	VA	1 000 ft	-	-	-	-	+1 000	-	-	-	RNP APCH	-
008	DF	JJ684	-	-	-	-	+4 000	-	34°57'17.9"N 126°43'53.3"E	-	RNP APCH	CG 320 ft/NM to 4 000 ft
009	TF	XEMIX	-	281 (272.2)	10.7	-	+5 000	-	34°57'41.4"N 126°30'53.8"E	-	RNP APCH	-

## HOLDING PROCEDURE

Holding Identification	Path Descriptor	Waypoint Identifier	Fly- over	Course/ Track M(°T)	Distance (NM)	Turn direction	Altitude (ft)	Speed (kt)	Coordinates	VPA/ TCH	Navigation specification	Remarks
RNP RWY 22R	HM	ORUSA	-	265 (256.6)	5.0	L	-7 000 +6 000	-230	35°17'25.0"N 127°06'14.5"E	-	RNAV 1	-
	HM	XEMIX	-	080 (071.6)	5.0	L	-6 000 +5 000	-230	34°57'41.4"N 126°30'53.8"E	-	RNAV 1	-

Change : Information of fix names(SERAN → LUVOL, JEBEE → IPDUT, FRISA → ORUSA, KOMAK → GUMAK, XEROX → XEMIX).

**AERODROME ELEV 48 ft**  
HEIGHTS RELATE TO  
THR RWY 22R - ELEV **48 ft**  
HIGHEST ELEV TDZ **48 ft**

GWANGJU APP	130.0
	228.9
GWANGJU TWR	118.05
	254.6

**GWANGJU/Gwangju(RKJJ)**  
**VOR/DME RWY 22R**

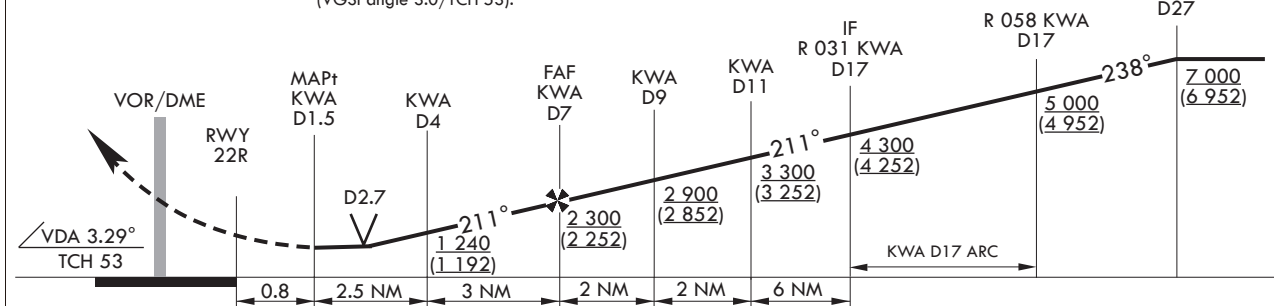
4 000 ↑ HDG 210°		KOTTY KWA D13
------------------------	--	------------------


### MISSED APPROACH

Climb to 4 000 ft on HDG 210°, then right turn direct to KOTTY and hold.

\* VGSi and descent angle not coincident (VGSi angle 3.0/TCH 53).

TRANSITION	ALT	14 000
TRANSITION	LVL	FL 140



CATEGORY	A	B	C	D
S-VOR 22R	740/40 692(700-3/4)		740-1 3/4 692(700-1 3/4)	
S-VOR 22R (ALS INOP)	740/55 692(700-1)		740-2 692(700-2)	
 CIRCLING*	740-1 692(700-1)	1 140-1 1/2 1 092(1 100-1 1/2)	1 140-3 1 092(1 100-3)	1 380-3 1 332(1 400-3)

\* Circling not authorized for west of RWY 22-04.

Change : Page control.

**INTENTIONALLY**

**LEFT**

**BLANK**

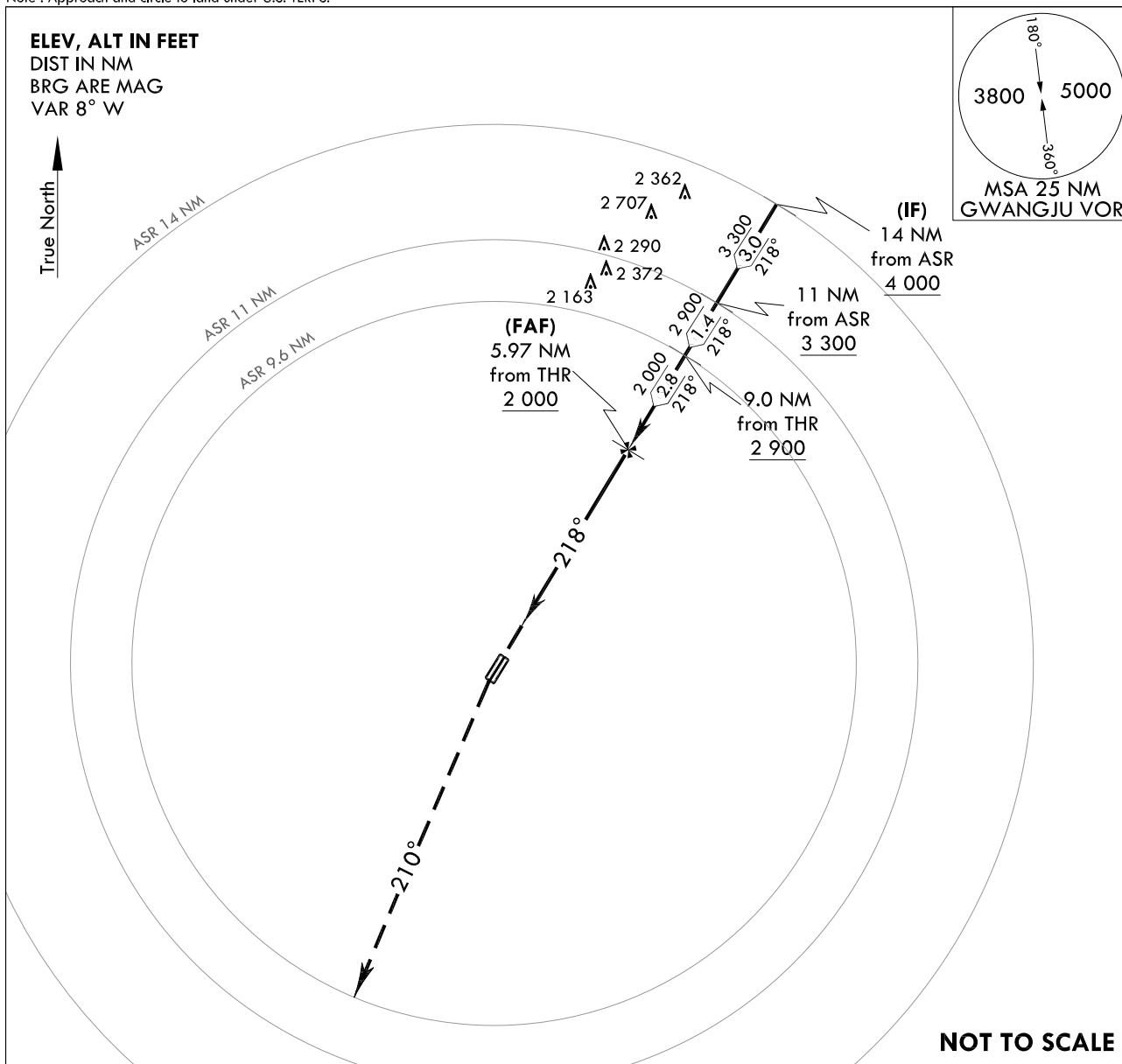


**AERODROME ELEV 48 ft**  
 HEIGHTS RELATED TO  
 THR RWY 22R - ELEV **48 ft**  
 HIGHEST ELEV TDZ **48 ft**

GWANGJU APP	130.0
	228.9
GWANGJU TWR	118.05
	254.6

**GWANGJU/Gwangju(RKJJ)**  
**PAR RWY 22R**

Note : Approach and circle to land under U.S. TERPS.

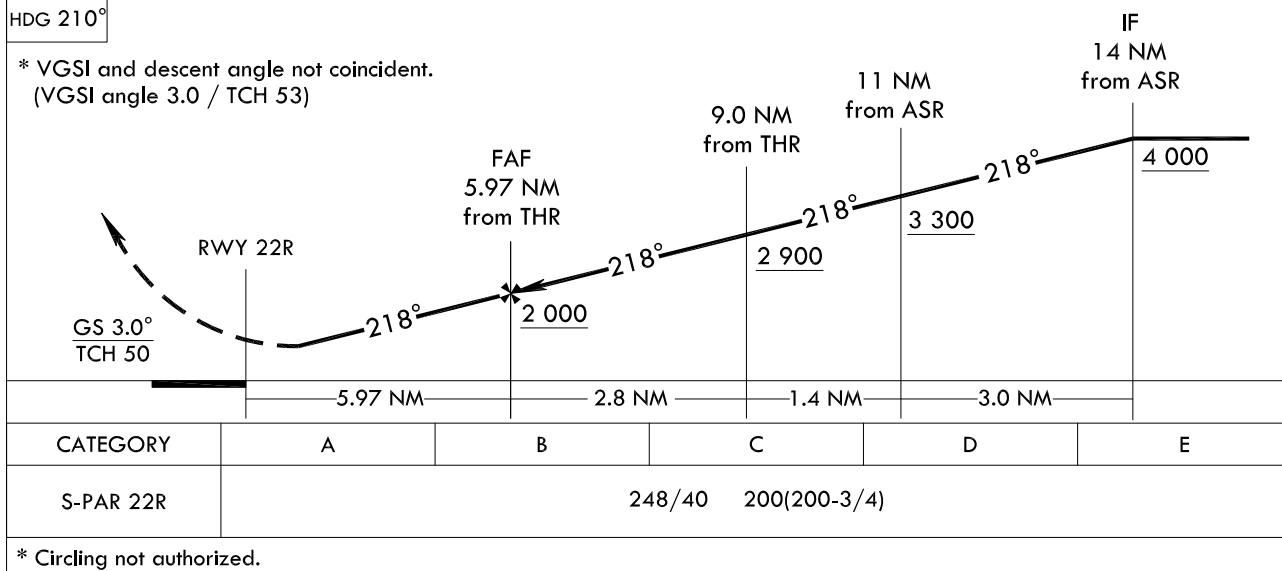


5 000  
↑  
HDG 210°

**Climb to 5 000 ft on HDG 210°, then expect radar vector.**

TRANSITION	ALT	14 000
TRANSITION	LVL	FL 140

\* VGSI and descent angle not coincident.  
(VGSI angle 3.0 / TCH 53)



\* Circling not authorized.

Change : Page control.

**INTENTIONALLY**

**LEFT**

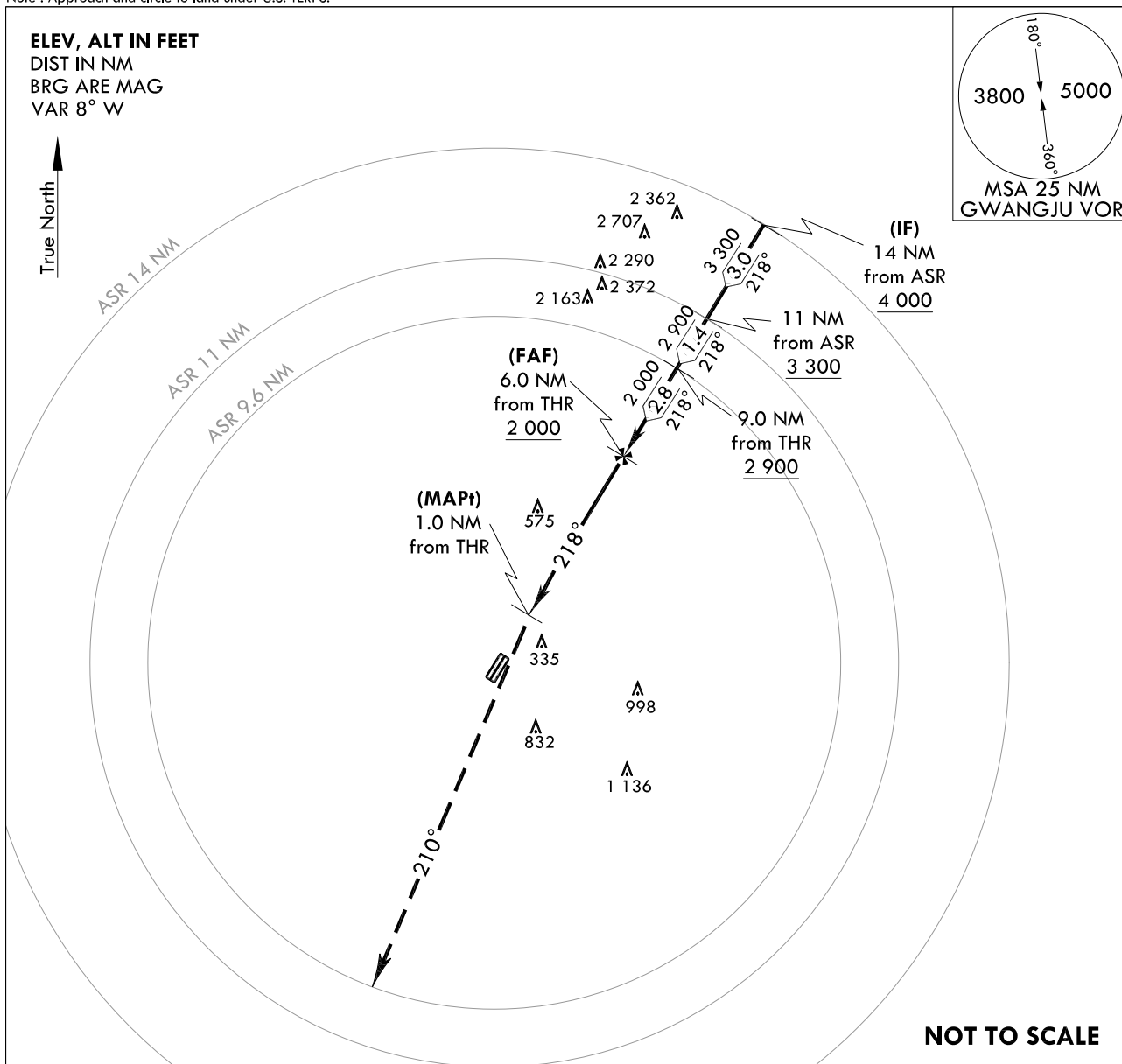
**BLANK**

**AERODROME ELEV 48 ft**  
**HEIGHTS RELATED TO**  
**THR RWY 22R - ELEV 48 ft**  
**HIGHEST ELEV TDZ 48 ft**

GWANGJU APP	130.0
	228.9
GWANGJU TWR	118.05
	254.6

**GWANGJU/Gwangju(RKJJ)**  
**ASR RWY 22R**

Note : Approach and circle to land under U.S. TERPS.

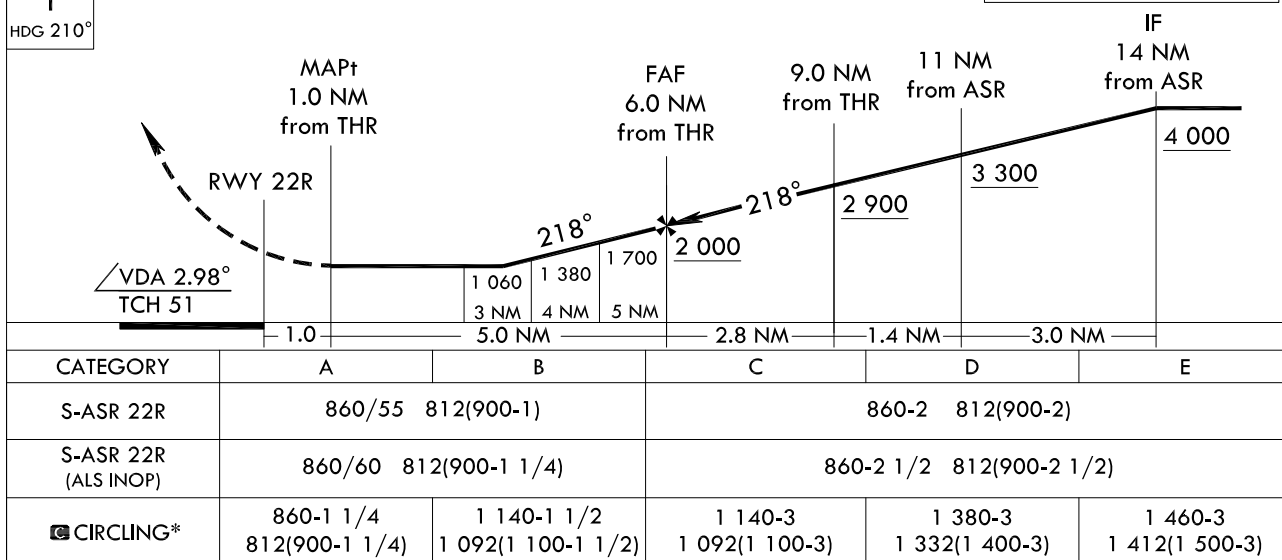


5 000  
↑  
HDG 210°

### MISSED APPROACH

Climb HDG 210° to 5 000 ft, then expect for radar vector.

TRANSITION	ALT	14 000
TRANSITION	LVL	FL 140



\* Circling not authorized for west of RWY 22-04.

Change : Page control.

**INTENTIONALLY**

**LEFT**

**BLANK**